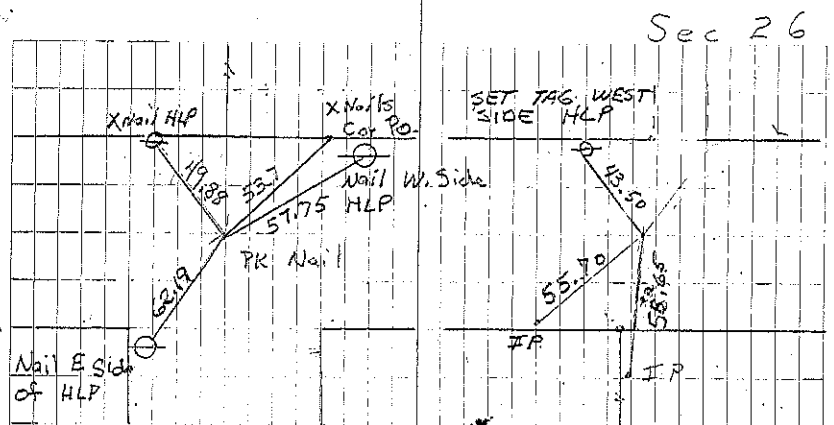


New Hampshire  
 A Stone Set Pin 2-2-67  
 Frame 8-1-63  
 B Stone Found I.P.  
 Relied 7-2-65

STAKE	50.372		
4 1/2 ch	207.8	38.97ch	2568.1
			40.19
Stone	2692.5		2170
	2691.8	76.70 ch	782.2
Stone	1356.5	1356.5	18.47
	2692.1	Stone	36.70 ch



Sta 279+81  
 Cor A  
 Set sp A in A.C. with 12-14-65  
 Relied 8-12-71  
 Relied 5-17-90 TS+JK  
 Consultant 12/3/96  
 Relied 8-98 JF, TR, JD  
 Set PK 10-2-03 JA+MT

Sec 26  
 Sta. 305+23.6  
 Cor B  
 Set N. in M+T  
 12-10-65  
 Relied 7-16-79  
 8-7-79  
 SET PK 10-9-03 MT-JF