

A Iron Pin 4-32-52 - Retired 7-7-64
 Found PK 8-11-04 File 2004-1887

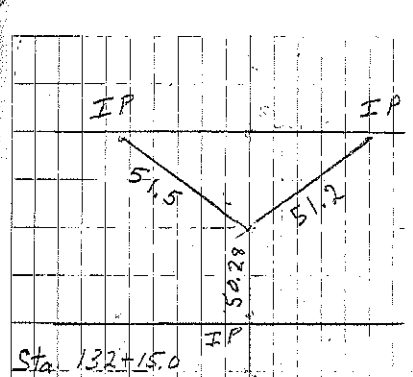
B Iron Pin 8-23-52 Sta. 158+94.94 Recd S-2282(2)
 Found PK 8-11-04 File 2004-1886

C Iron Pin 5-15-54
 Found station I.F. 4-23-64

A' Const. P.I. only STA. 115+86.4
 Proj S-2282(2) Retired 7-10-64

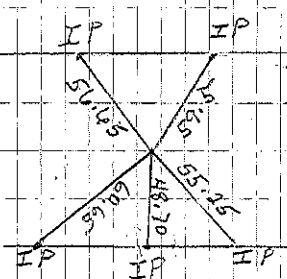
* distance by Tekippe Empr 8-11-04 Foster A&B Plat

1369.5	1367.5	1362.5	1359.5
	2701.4		2677.3
1366.5	1366.5	1369.5	1374.5 C 1" IP
2665.1	2672.86	*2681.76	
		*1340.80	*1340.88
IP	IP PK	39.76 ch	B PK IP
		A'	



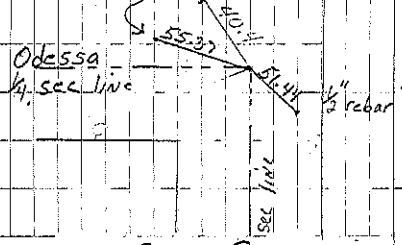
Cor. A

Set spk in AC Mat 12-10-65
 Set PK in AC Mat 10-9-03
 Mr. Shinnick Retired 8-11-04



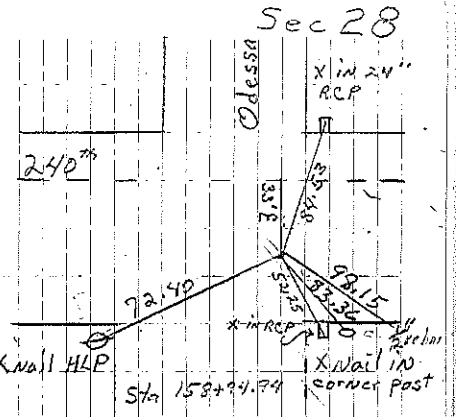
Cor. A' on Sec Line

Set Spk in AC Mat 12-10-65
 2" rebar 1" pipe 8-9-96 JF



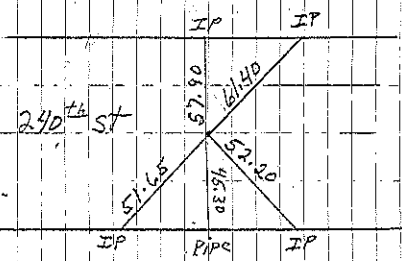
Cor. C

Pherold retired 1-02 File 2002-0068

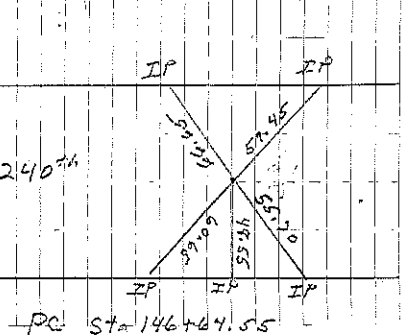


Cor. B Sec. Cor.

Set spike in AC Mat 12-10-65
 Re Set IP in AC Mat 1-9-64 Edman
 Re Set PK 10-9-03 MTA JF
 Mr. Shinnick Retired 8-11-04



Cor. H' Sta. 119+61.7



PC Sta. 146+64.55