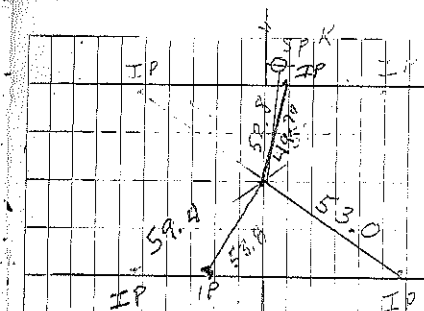
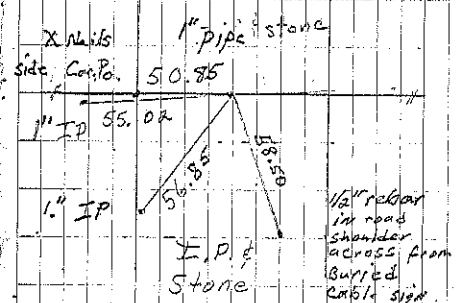


New Station
 A Iron Pin Reset 4-23-62 Found 7-31-63
 B Iron Pin Reset 4-23-62 Found 7-31-63 Found PK
 8-11-04 File 2004-1888
 C Found I.P. & stone 4-3-61 Found 6-12-62
 Consultant found 1" pipe 6-30-05 File 2005-1330

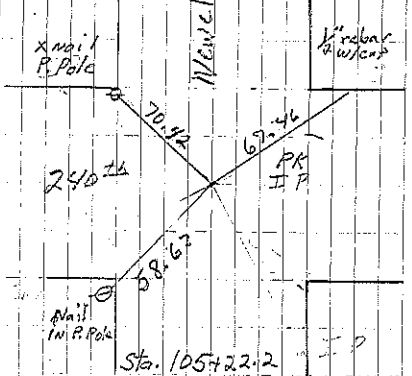


Sta. 78+07.37
 Cor. A
 Set SPK in AC Mat 12-10-65
 8-7-79
 Set PK 10-9-03 MT+JF



Cor. C
 M. Shimuk retied 6-30-05

Sec 29



Sta. 105+22.2
 Cor. B
 Set SPK in AC Mat 12-10-65
 8-7-79
 PK " " " 10-9-03
 M. Shimuk retied 8-11-04

A PK
 B PK