

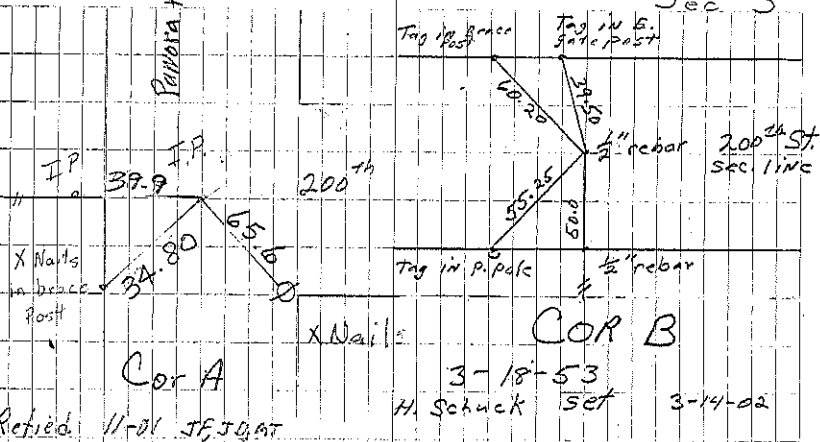
New Hampshire

A IP retied 4-11-63

B H Schuck set 1/2" rebar w/cap 3-14-02 File 2002-0936

Peabody Ave

Sec 3

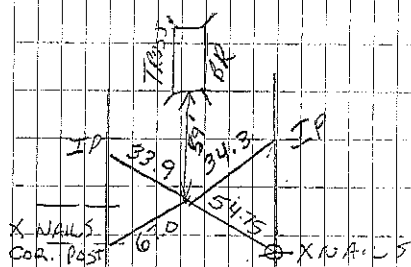


Cor A

COR B

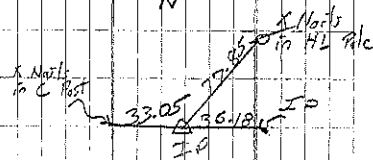
Retied 11-01 JF, JG, AT

3-18-53 H. Schuck set 3-14-02



COR O

Set for Br. Const. Only



COR O. Set

Measured 33' From Very Old Corner Post. Set for Const. only

1/2" rebar
A
B