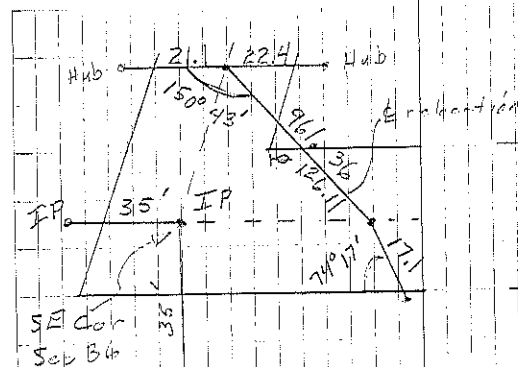


H New bearing for
Set I.P. for const. 34' from
west cor. post 5-7-57

G Set I.P. for const. 5-7-57

C Consultant found $\frac{1}{2}$ " I.P. and tied in
5-1-97

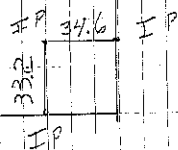


Cor B Taken from
survey for relocation
by E. W. Hansen + 1942

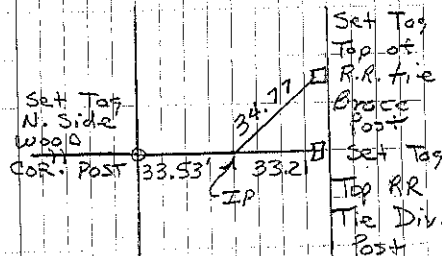
Cor. Post 34' 34' I.P.

Cor H
5-7-57

Sec 36



Cor G 5-7-57



COR C
Consultant Retired
5-1-97