



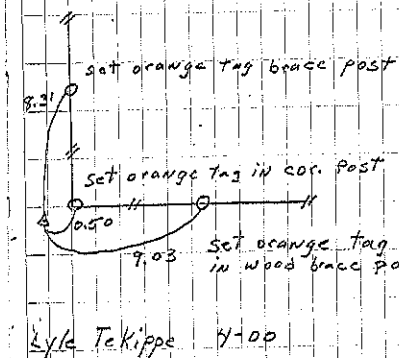
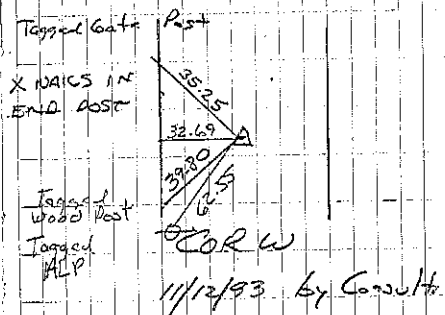
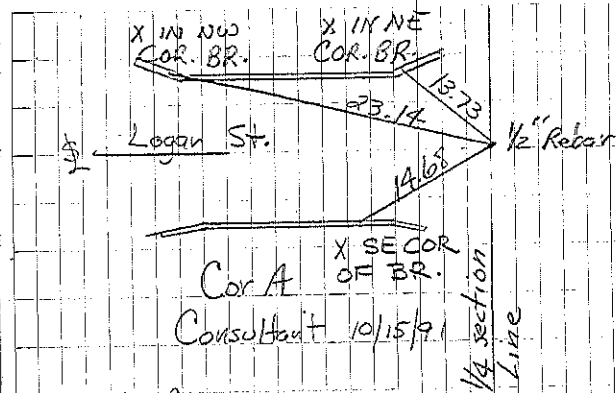
New Hampton Twp.

A Set 1/2" Rebar w/cap  
Tekippe Eng 10/15/91

B Set 1/2" rebar w/2" aluminum cap LS 7060

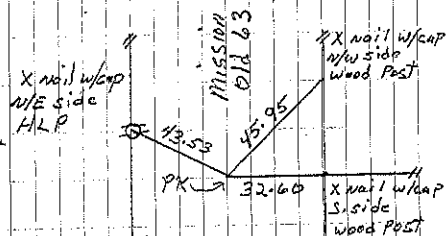
D End PK nail on centerline 12-28-94 PK 156 pg 465

Sec 7



Cor B

Sec 6-95-12



Cor O

L. Erdman ret'd 12-28-94