

A Richland  
Iron Pin Ref'd 1950

B Iron Pin Ref'd 1950 P. Herold retired 9-5-01  
File 2001-1917

GT H1 Consultant set PK Midway between section corners 12/8/93

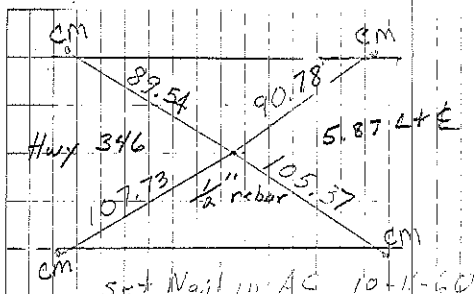
COR X SE COR NW 1/4 - SW 1/4 10-94-13  
Consultant Set 1/2" IP w #7060 11/1/96 per two.  
Previous surveys dated 4-17-39 Deed Book 119 Page 362-365 and dated 12-17-93 Deed Book 153 Page 415-417 - Chick. C. Recorder Office

C Set 1/2" rebar w/alam cap 5-12-07, File 2007-0971

GT H1

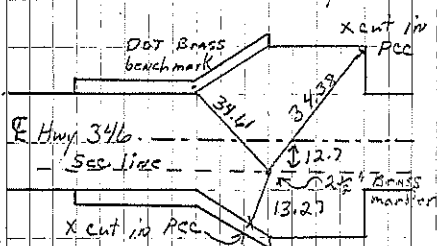
A

B



Cor A

Paul Herold Retired 9-5-01



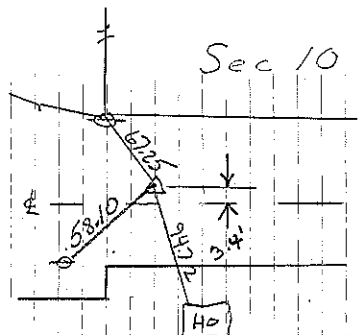
Cor B

Paul Herold retired 9-5-01



Cor C

P. Herold set 5-12-07



COR GT H1

by Consultant 12/8/93

