

Richland

A

Iron Pin 1920. Set nail in AC 10-11-60. Fnd

Nail 8-5-85. Set nail in AC 9-17-87

B

Brown Ply Stone 1920 Found DOT MONUMENT

12/68/92 Consultant

C

Brown Ply Stone 1920 Found 2" DOT monument

3-02 File 2002-0688

O

Fnd. 1/2" iron pin 5-12-07. File 2007-0973

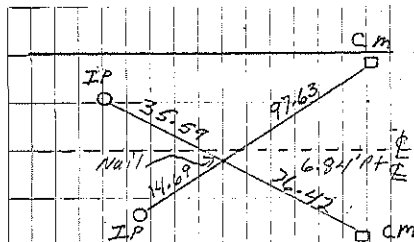
Y

Set 1/2" rebar w/ alum. cap 5-12-07. File 2007-0973

IP + Stone

6.84 RTQ

Sec 12

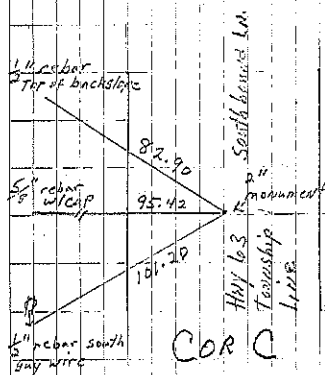


Cor A

ISHC set nail in AC 10-11-60

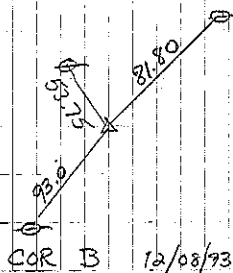
8-5-85 I DOT

Set 9-17-87



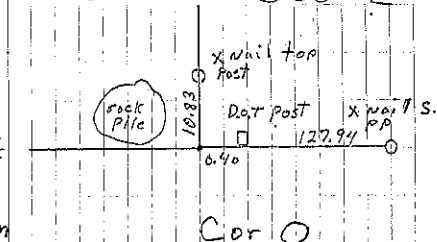
Cor C

P. Herald ref'd 3-02

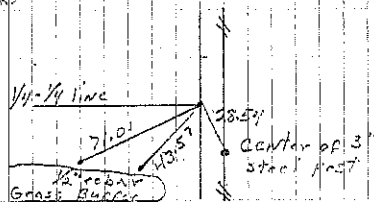


Cor B 12/08/93

By Consultant



Cor O



Cor Y