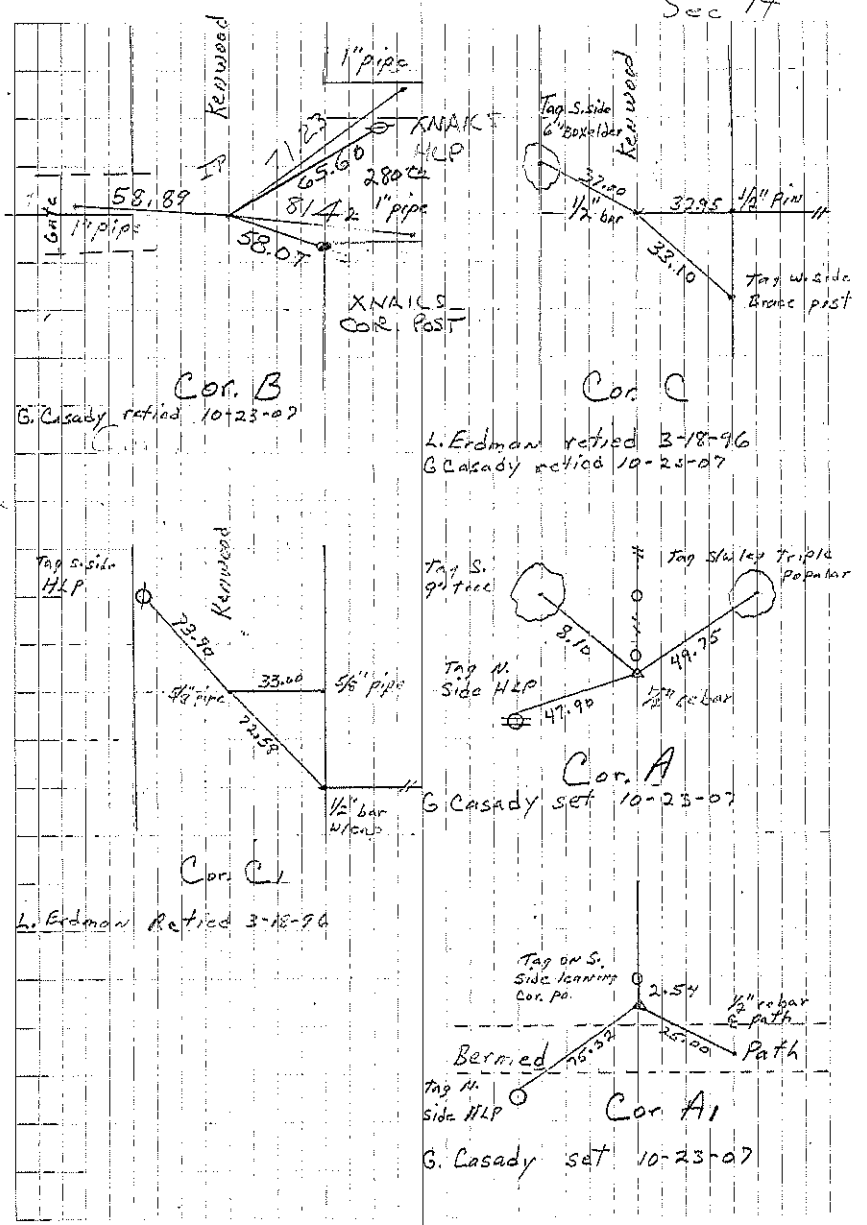


Richland

- A Set 1/2" rebar w/alum cap 10-23-07. File 2007-2076
- B Stone 4-17-30 Found 6-8-66  
Fnd. 30D nail 12" deep 10-23-07. File 2007-2073
- C IP 6-18-30 33' from E. fence. 6-7-66 split fence st  
Set IP. Fnd 1/2" rebar 3-18-96 BK 160 pg. 422  
Fnd. 1/2" iron pin 10-23-07. File 2007-2075
- A1 Set 1/2" rebar w/alum cap 10-23-07. File 2007-2076
- C' Found 5/8" pipe w/cap 3-18-96. BK 160 pg. 421

Sec 14



A 1/2" rebar  
 A1 1/2" rebar  
 B 30D nail