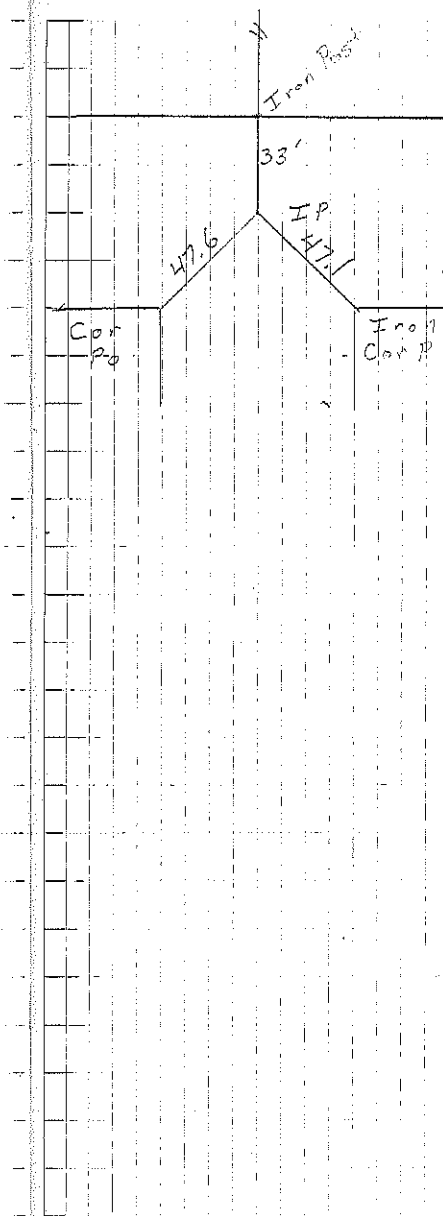


A Rick's  
Found Stone 9-4-35 30' Front N. Post  
Place Small Brick on Top

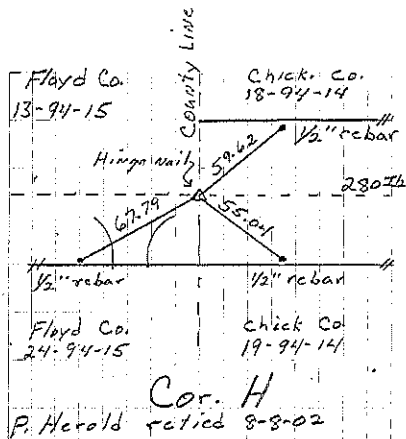
B Iron Pin 10-13-52

	35.15		40.42	Stone
				4002
Stone	30.57	Stone		Stone
	1560	Car Post		
4026 4030 4013				4037
Stone C rockery	1790	2003	Stone 37.52	Stone
	3793			



Sec 18

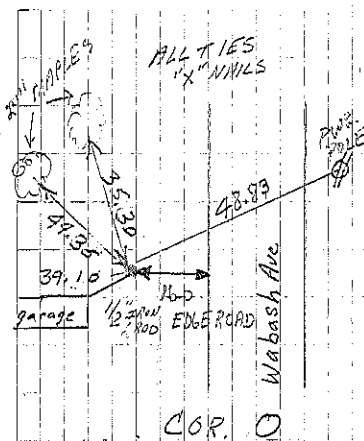
H. Found hinge nail 8-8-02. File 2002-1930



18-94-14

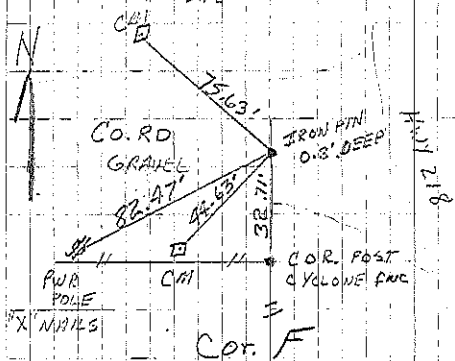
○

Found conc. mon. w/1 1/2" rebar. (Info from  
Wallace & Holland 10-75) 3-6-99. BK 167pg 75.



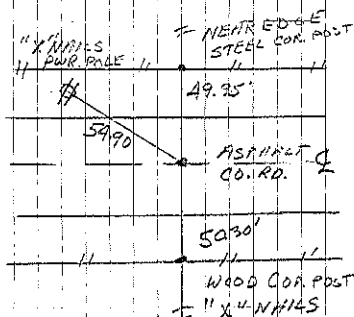
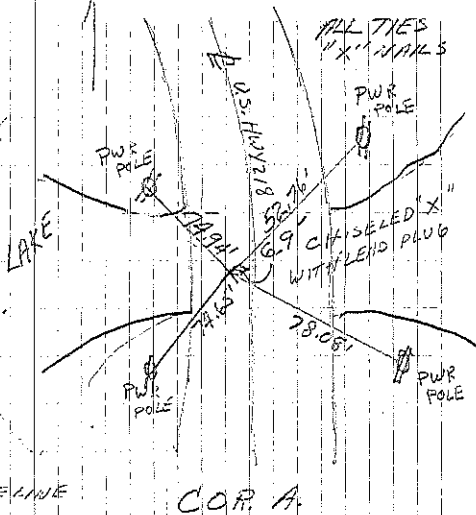
IRON ROD FOUND FITS USRGE LINE

RUNNING WAY AND CHECKS  
REVISIONARY WELL AGAINST DIST  
OF 79.41 AS GIVEN FROM  
O.F.U.S. NO 218



David Buss FWS 8-29-75

18-94-14



COR. S  
RELOCATED PLUM LINE BETWEEN  
N 1/4 COR AND NW COR SEC 19  
AT DIST SHOWN ON MAP.  
HICK ET AL SURVEY OF PLOTS  
ALONG SOUTH SIDE SE 1/4 SW 1/4  
OF SECTION 18-94-14

(SEE NEXT PAGE)