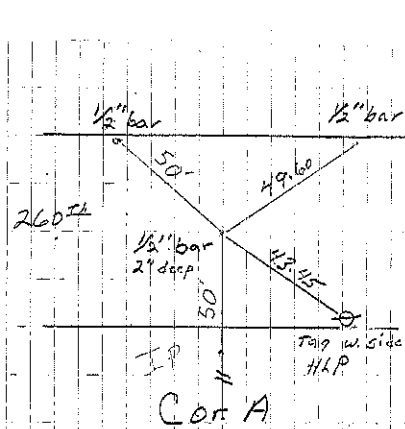


Richland

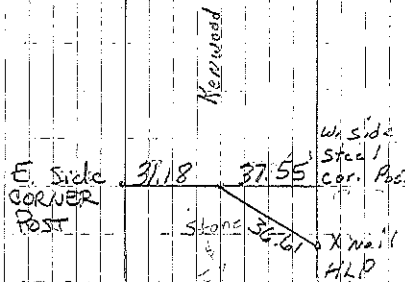
- A Iron Pin 1930 Found I.P. 5-27-59
- Found 1/2" bar 12-6-94 BK 156 Pg. 464
- B Stone I.P. 6-26-28. Dug large hole & found nothing. Set I.P. between fences 4-21-69. Found 1/2" square bar 12-6-94-BK 156, Pg. 464. Found 1/2" square bar 1-30-07- File 2007-0225
- C Stone Iron Pin 6-7-07 Found stone and I.P.
- B1 Set 1/2" rebar w/cap 1-30-07. File 2007-0225
- Y Set 1/2" rebar w/alm. cap 5-10-07. File 2007-0968
- Z Set 1/2" rebar w/alm. cap 5-12-07 File 2007-0968

See After Sec 36 Richland

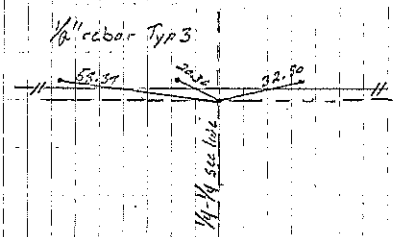
1323 <sup>3</sup>	1323 <sup>3</sup>	2010 <sup>1/2</sup>	2010 <sup>1/2</sup>	stone
		stone	stone	Iron
stone	stone	stone	stone	stone
2013	2013	2008	2008	stone I.P.
2009 <sup>1/2</sup>	stone	40/6	40/7	1/2" rebar
Iron Pin	I.P.	A	B	stone square bar
1328 <sup>4</sup>	2013 <sup>5</sup>	2013 <sup>5</sup>		



L. Erdman Retired 12-6-94

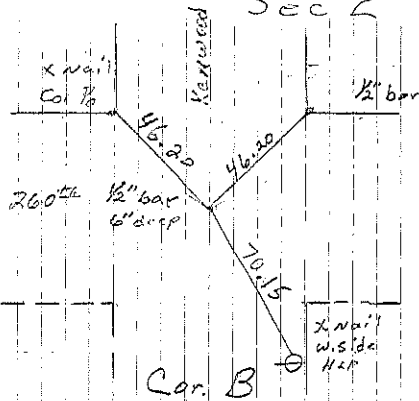


Consultant Retired 8/92

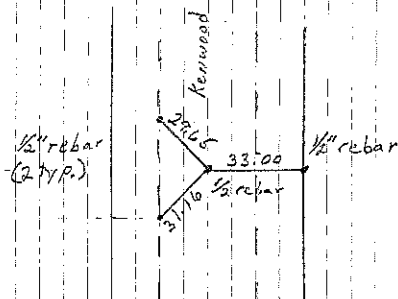


Cor Y P. Herold set 5-12-07

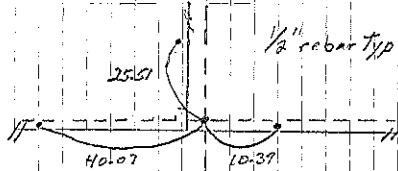
Sec 2



L. Erdman Retired 12-6-94  
P. Herold retired 1-30-07



P. Herold set 1-30-07

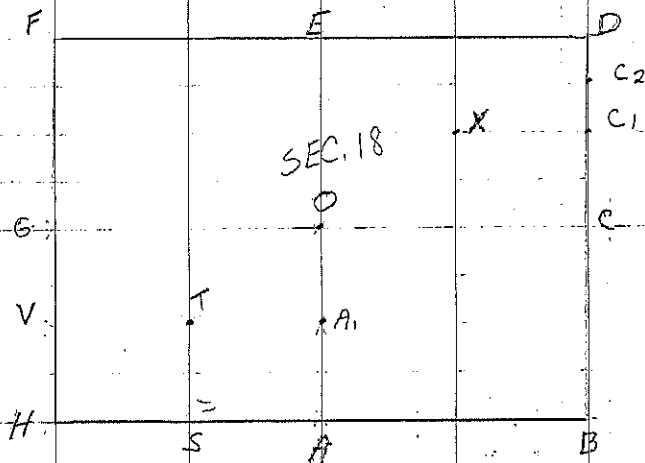


Cor Z P. Herold set 5-12-07

Sec 18-94-14 - LAND SURVEY MONUMENT RECORD

A1 Found T-bar w/cap 8-8-02. File 2002-1930

T Set at prop. dist. E-W & N-S to 1874 survey plat



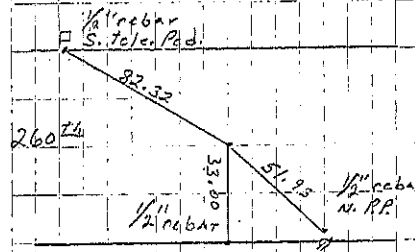
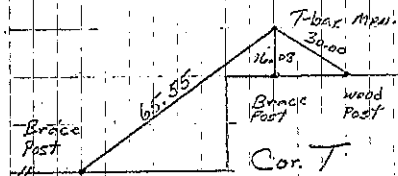
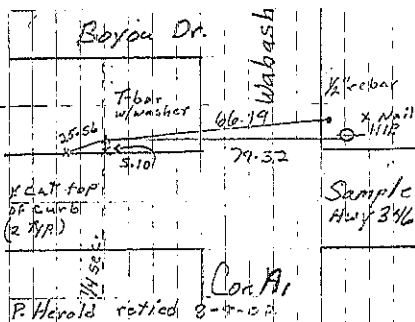
A1 Set 1/2" rebar w/alum cap 5-12-07. File 2007-0969

Sec 2-94-13

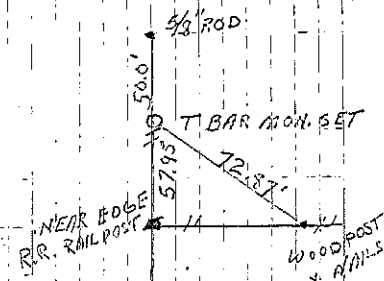
Richland

TIES SET BY WALLACE HOLLAND

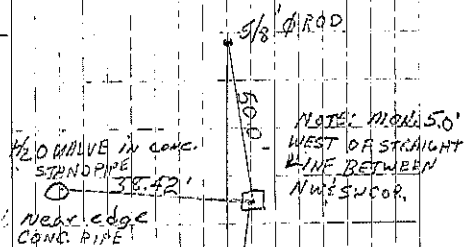
R.L.S.  
OCTOBER - 1975



P. Herald set 5-12-07



COR. U  
SET AT MIDPOINT  
BETWEEN RE-ESTABLISHED  
W/TA. AND S.W. COR. OF  
SEC. 18



COR. G.

MEASURED DISTANCE FROM S.W. TO N.W. COR. OF SEC. 18 = 528.54. FOUND IF 20-095 CH. DIST. OF RECORD IN 1874 PLAT IS EXPANDED FOR 5/8" SEC. 18 WE HAVE 1326.274 x 2 = 2652.548 WEST SIDE 5/8".

(SEE NEXT PAGE)