

A Drive IP 33' from iron post to south. Found 11-1-62
 Fnd. 1/2" rebar 10-23-07. File 2007-2070

B IP OVER STONE 1920

C₁ See behind Section 36

D Fnd. granite stone w/ steel pipe on E. side 10-23-07. File - 2007-2071

X Fnd 1/2" rebar 10-23-07, File 2007-2072

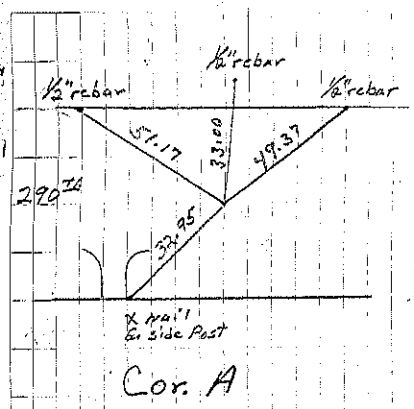
stone 40 68 stone stone

X Y

I.P.
5' Long

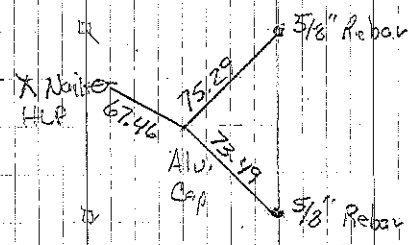
Stone
IP
1/2" rebar

Lead
Plug

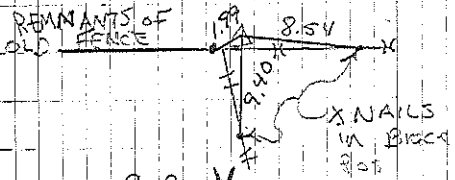


Cor. A

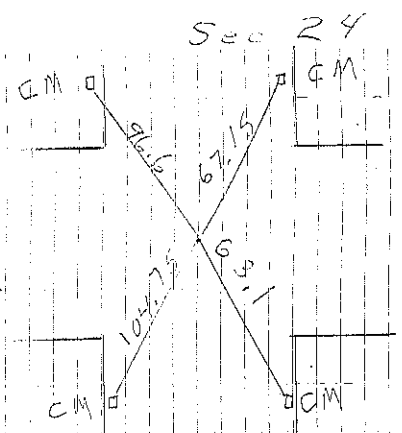
G. Casady Fnd. 10-23-07



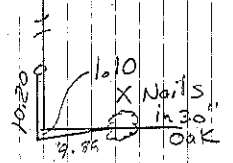
Cor. C
Retired 4-10-92
by Consultant



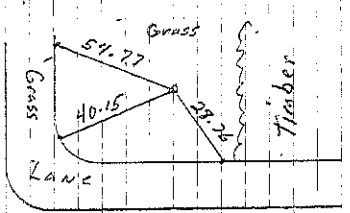
Cor. Y
by Consultant 4/10/92



Cor. B



Cor. D by
Consultant 4/10/92
G. Casady retired 10-23-07



Cor. X
Consultant retired 4-10-92
G. Casady retired 10-23-07