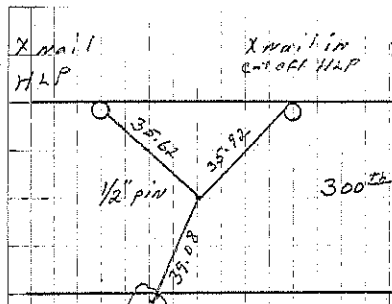


B Stone 1930, Found DOT nail + washer 5-8-06
File 2006-0983

C Stone 1935, Found DOT nail + washer 5-8-06
4.8' east of centerline 5-8-06, File 2006-0983

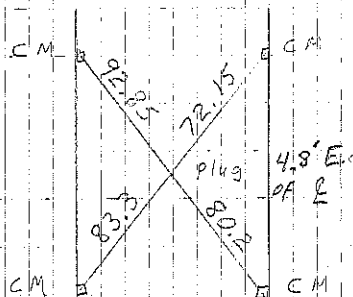
A Found iron pin w/ DOT cap 6" deep 5-8-06
File 2006-0984

O Found 1/2" iron pin 6" deep 5-8-06, File 2006-0984

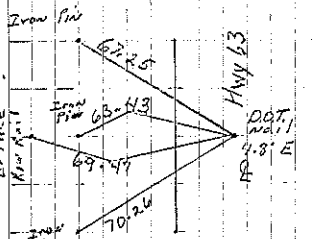


X nail in 15" Tree
Cor. A

D. Prange retired 5-8-06



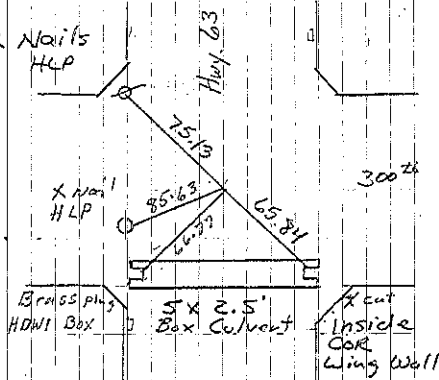
Cor. B



Cor. C

D. Prange retired 5-8-03

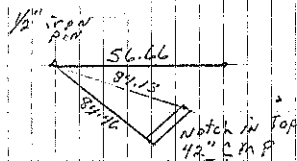
Sec 25



Cor. B

Consultant Retired 6/22/94

D. Prange retired 5-8-06



Cor. O

D. Prange retired 5-8-06