

A	Rich Stone Iron Pin	Reref.	1950	retied 8-9-56
B	Iron Pin	Reref.	1950	Retied 8-12-56
C	Angle Iron			

2334.12
3527

stone

4041

4061

Iron

4029

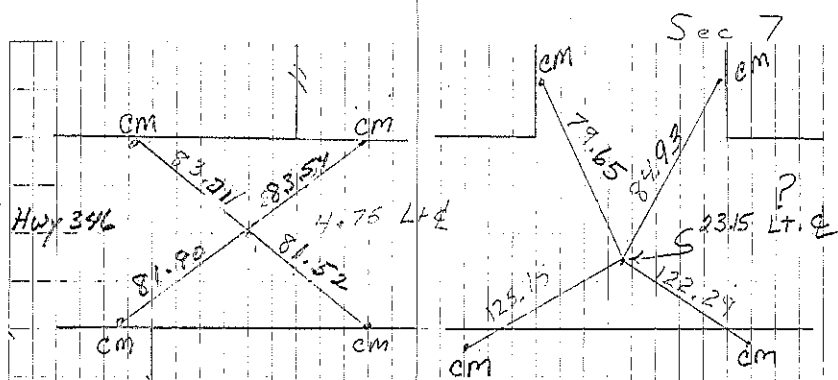
Stone
Iron

Stone

3515

4042

Stone



Cor A

set N on in RC 10-N-40
Retied 8-1-85 DOT
Retied 7-22-87 DOT

Cor B

4-8-57
Retied 8-1-85

C₁ Consultant set P.K. nail, Equidistant
 Sec 17 and on line between the NE corner
 Bradford and the E¹/₄ corner 10/2/97

Sec 7 Bradford twp
 Z

Sec 8 Bradford twp
 A' File 2005-0712

Sec 7 Bradford Twp
 A2 BK 167 pg 74

