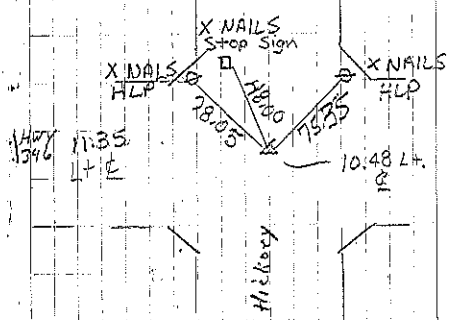
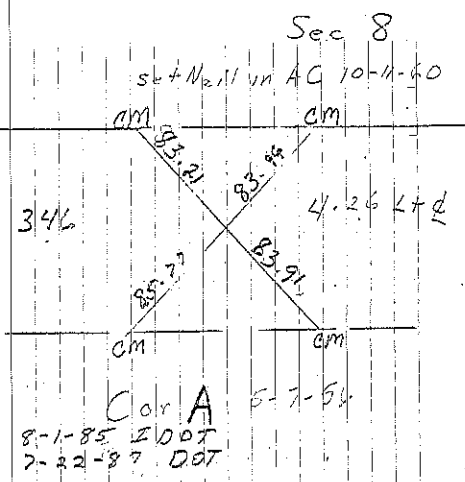


Richland

A Iron Pin Ref'd 1950

B IRON PIN R.F'd 1950
Found Pin 5-23-1920

C Set Iron Pin for Const. Only 9-12-57
Found I.P. & raised 11-20-72 Dummeran & Neugebauer



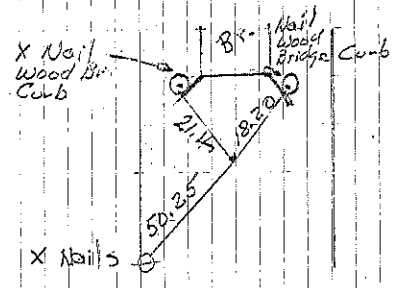
Cor B

Set Nail in AC 10-11-60

Ref'd 4-22-71

8-1-85 IDOT

Consultant 4/24/95



Cor C 11-20-72

Consultant 4/24/95

