

Stapleton

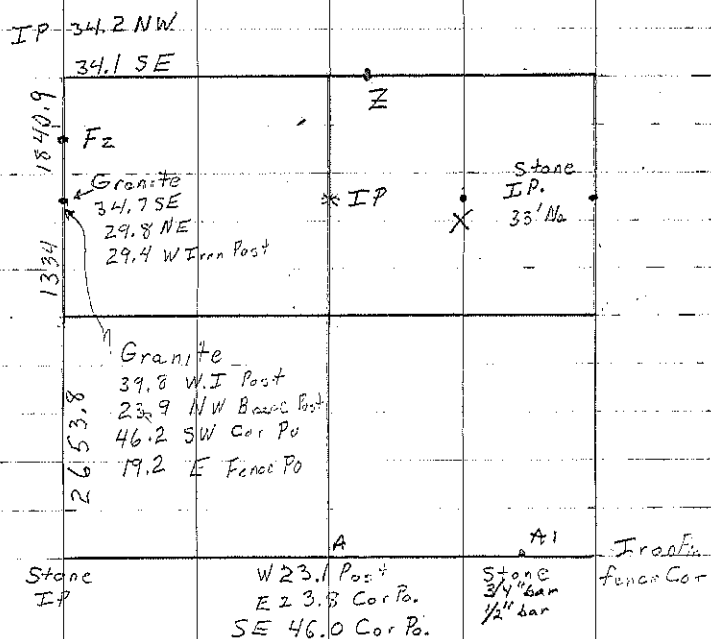
A Retired 6-5-52. Set 1/2" rebar w/ 2" sap

4-16-07. File 2007-0734

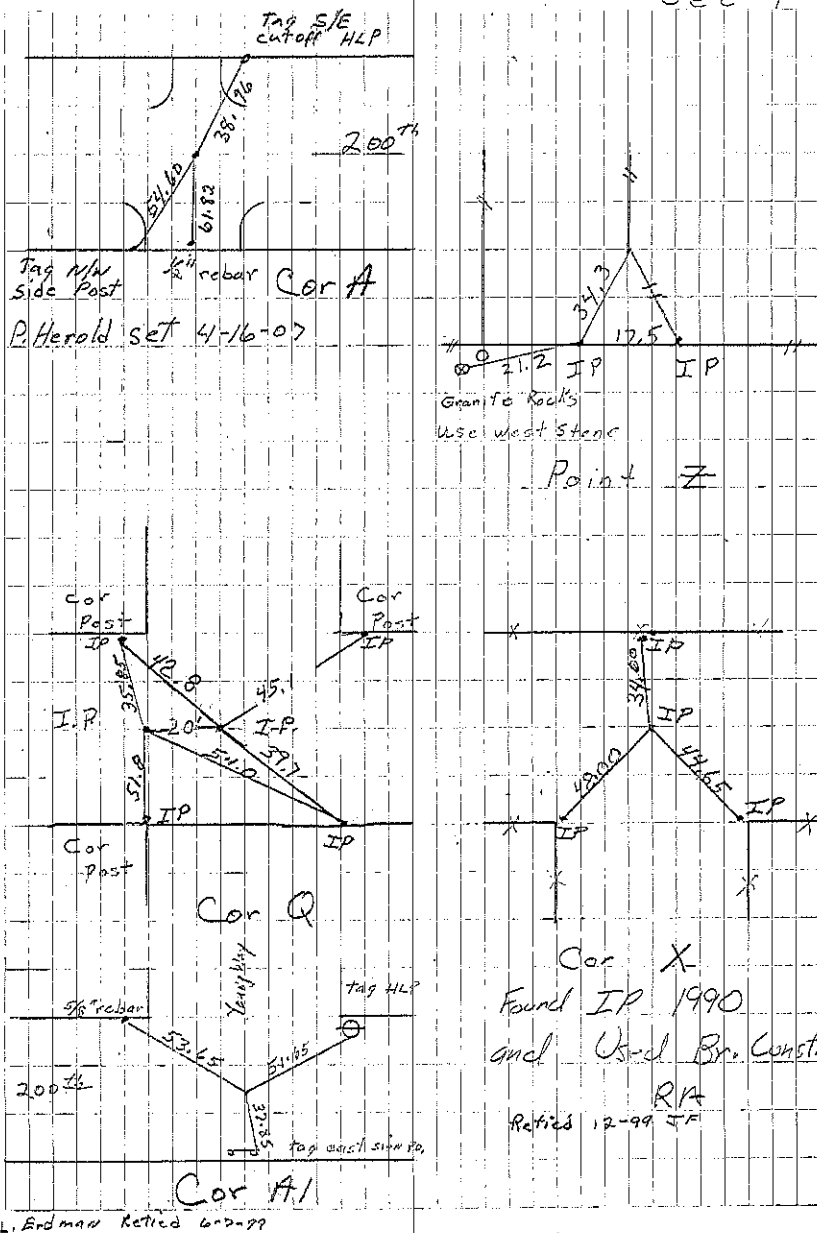
Q April 1953 Found IP 3-1-90. Retired RA

Z Found Rotten hub with nail
set I.P. 4-23-53

A1 Found 3/4" bar-set 1/2" rebar over 6-7-99. BK 172 pg 9?



Sec L



Cor X
Found IP 1990
and Used Br. Const
RA
Retired 12-99 IF