

Stapleton

A Iron Pin 1922 Found 7-9-63

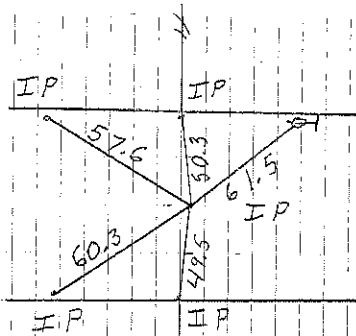
B Iron Pin 1922 Found 7-9-63

Fnd lead plug 1.9' south of centerline. File 2008-0085

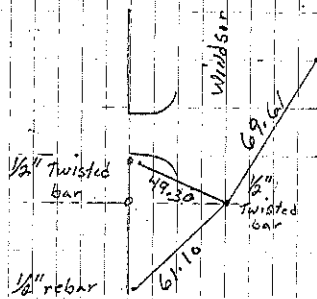
C Set 1/2 way between Sec. corners on line

Fnd 1/2" twisted bar 5-30-07. File 2007-1096

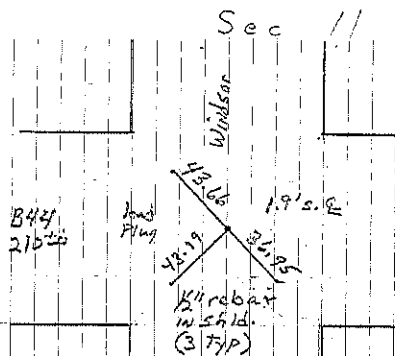
				Stone IP
			1923	
			1923	
40.18			IP	24.5 to Iron Post
			1300	
			1346	
2583.4	A	2659.5		lead plug IP



Cor A  
9-2-63



Cor C  
P. Herold retidd 5-30-07



Cor B  
4-8-68

Consultant found 1" lead  
Plug retied 4/21/74  
P. Herold retied 1-11-08