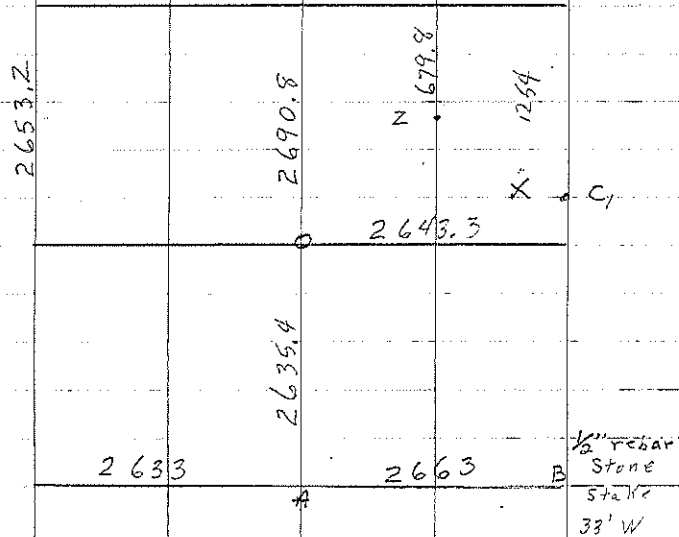
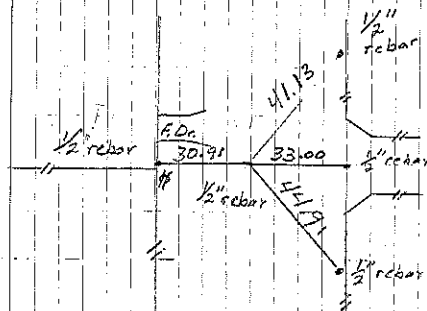


Stapleton

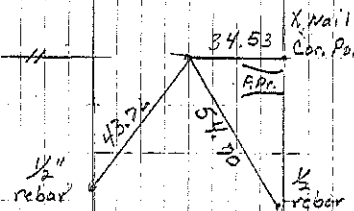
- B Stone & IP 4-28-54  
 Found stone 4' south of fence  
 west set IP, 5-13-65  
 Found IP 7-27-83  
 Found 1/2" rebar 1-24-05 File 2005-0160
- C Iron Pin 4-28-54 Found 9-22-69  
 Found 1/2" rebar 1-24-05 File 2005-0160
- A Consultant found 1/2" rebar File 2003-0097
- O Consultant found 1/2" rebar south side of Cor. Post  
 File 2003-0097



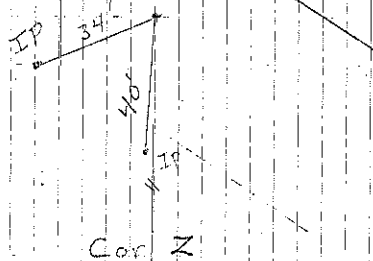
Sec 23



Cor B  
 5-13-65  
 Retied 7-27-83 JKM  
 M. Shimak retied 1-24-05



Cor C  
 9-21-69  
 7-27-83 JKM  
 M. Shimak retied 1-24-05



Cor X