

Stapleton

A Iron Pin 5-1-52

Set 1/2" rebar w/cap 8-10-05. File 2005-1699

B Split fences & set Ties 4" deep
for corner 4-26-71

C Stone State 33' each way

Found IP 7-27-83 For Ties see
back of Stapleton Twp.

X Consultant set 1/2" rebar w/cap 15" deep
File no. 2003-0098

A₁ see back of Stapleton Twp. Sec 26

Y consultant found 1/2" rebar w/cap 1-9-03. File
no. 2003-0099

40.22

40.22

Boulder

Stone

IP

IP

X

Y

C Stone

20.08ch

20.95ch

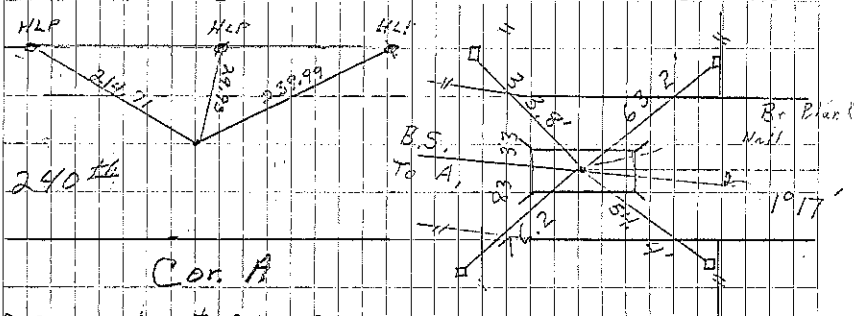
39.80ch

39.90ch

40.00ch

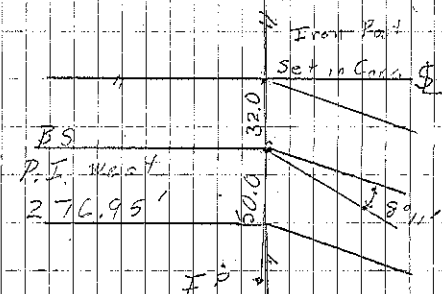
A' Boulder
B Boulder
Iron Post set in
conc.

Sec 26

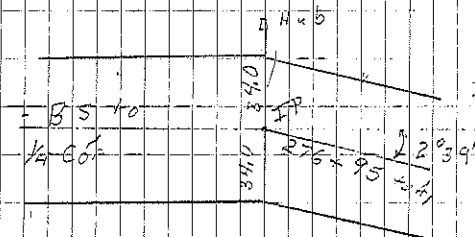


Cor. A

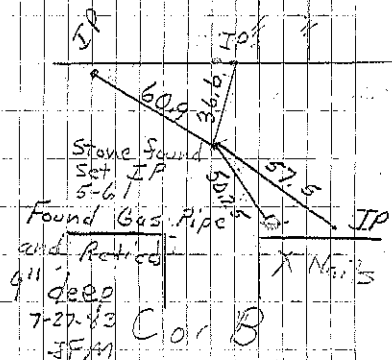
D. Crawford set 8-10-05



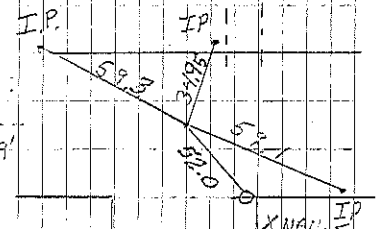
Cor. A, SW 1/4 Cor SE 1/4



Ref. to P.I. West of Cor. A



Cor. B



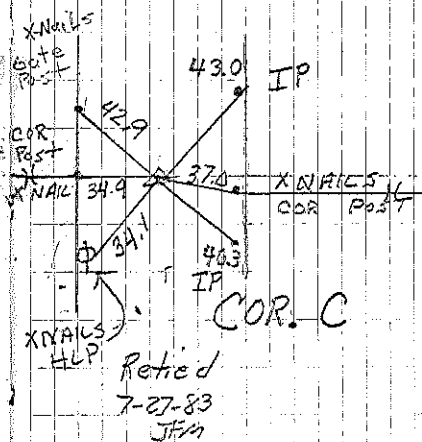
Cor. B For Const

H-34-71
Retired 7-27-83
4" deep JFM

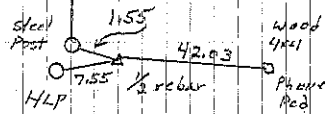
Stapleton Twp.

C Found IP and Retied 7-27-83 JFM

A₁ Set 1/2 rebar w/cap 8-10-05. File 2005-1700



Sec 26



COR. A₁

D. Crawford SET 8-10-05