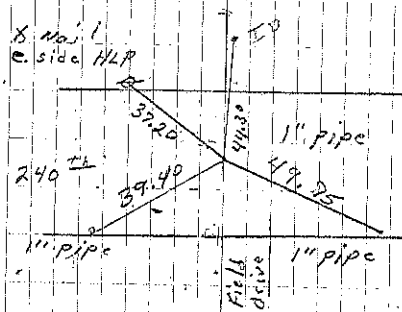
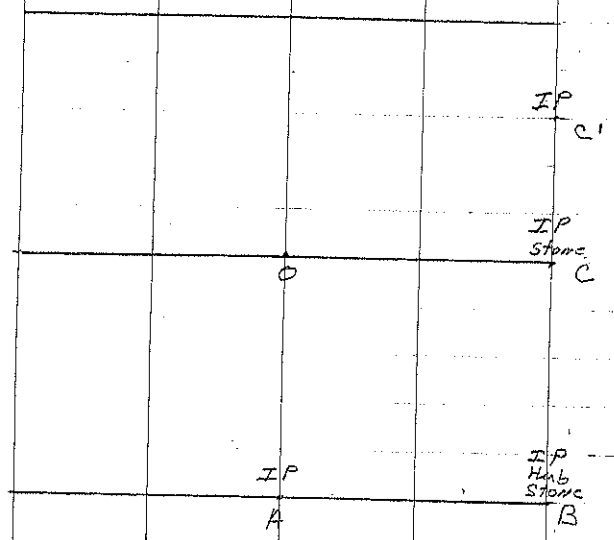
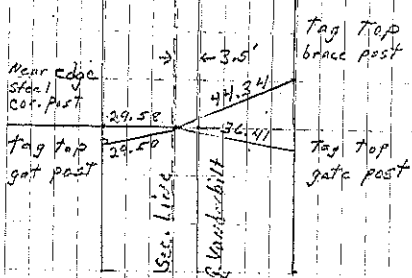


Staple 400

- A I.P. 4-7-5 = Retired 4-8-64
- Set 1" pipe 12-23-03. File 2004-1466  
 Stone Hub
- B IP 4-4-52 Found IP 7-27-83 1' deep
- C stone  
 29.5 from East to West
- Consultant set 1/2" rebar w/cap 1-9-03 File  
 No. 2003-0096
- C' Consultant set 1/2" rebar w/cap 1-9-03 File  
 No. 2003-0098
- O Li Erdman set 3/4" rebar w/cap 12-23-03  
 File 2003-3820

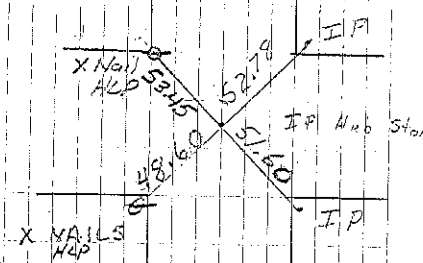


Cor A 4-8-64  
 Li Erdman set 12-23-03

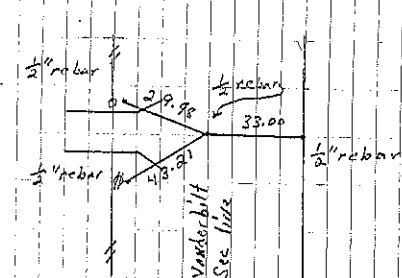


Cor C  
 P. Herald set rebar 1-9-03

Sec 27



Cor B  
 Retired 7-27-83



Cor C'  
 P. Herald set rebar 1-9-03