

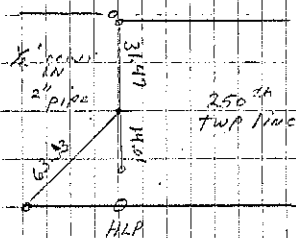
Stapleton

A Set gas pipe 3' Long. Set $\frac{1}{2}$ " rebar
w/ cap in gas pipe 6-13-04. File 2004-1352

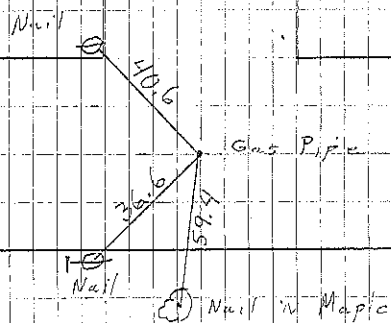
B Set gas pipe 2' Long

C Hub 33' East

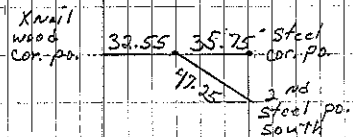
Sec 34



COR. A
M. Shink set 6-13-04



Cor B



COR. C
Retied 2-02 JF, MT, TS