

Stapleton

C Iron Pin 1924 Book #15 (Co. Road)

Lawler - Positive Band Set 3/4" rebar w/cap 9-6-00

File 2000-1557

~~WZ~~ P. Herald set 1/2 rebar w/cap 2-5-04 File 2004-0275

~~FY~~ P. Herald set 1/2 rebar w/cap 2-5-04 File 2004-0275

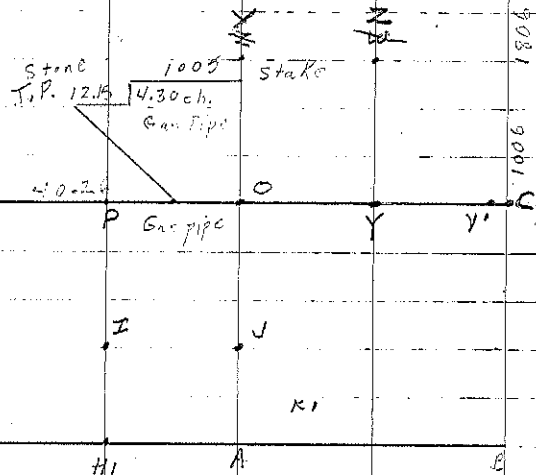
R Hub 1927 Found Grappice & oak hub. Set hub on original corn. stake on E of Main & on N E S E of SE 1/4

Y P. Herald set 1/2" rebar w/cap 2-5-04 File 2004-0275

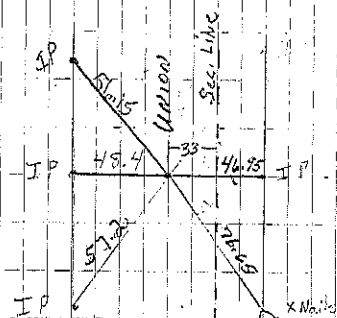
A Established 8-14-85 IDOT  
A' Established 4/28/98 Consultant  
B Established 6/7/98 Consultant

SEE ~~After Stapleton Sec 31 for add ties~~ Next Page

Cor. E', P, O, A, A', C, H'  
E' stone

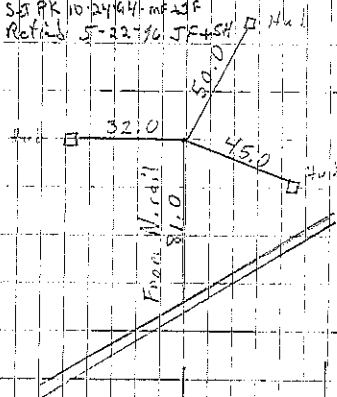


Sec 4

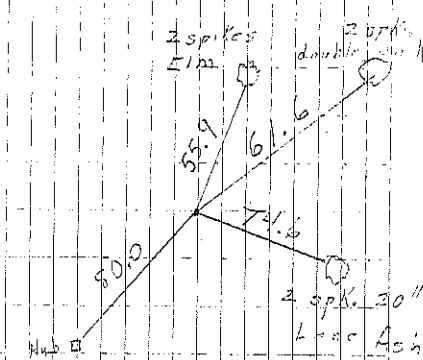


Cor. Y'  
5-18-67

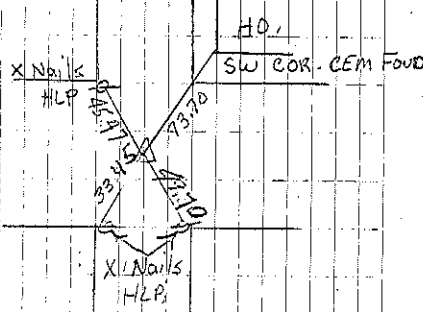
STA 40+1.75 B+1/286  
DA 4-21-73 G-19-76  
SET PK 10-24-94 MF 23F  
Ref'd 5-22-96 JFM+JF



P1 STA 433+57.3  
V-56 Plans



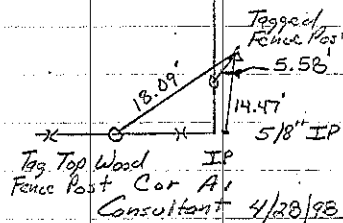
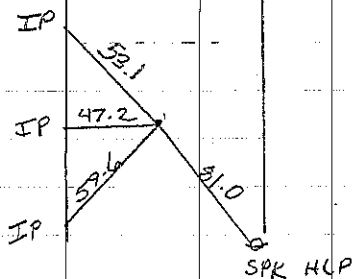
Cor. X'



Cor. A  
8-14-85 IDOT  
Consultant 4/28/98  
Checked Ties 8/24/05 JFM+JF

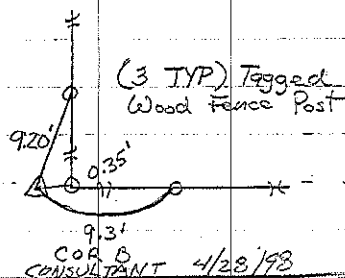
STAPLETON Twp

Section 4



POT Sta 403+93.5

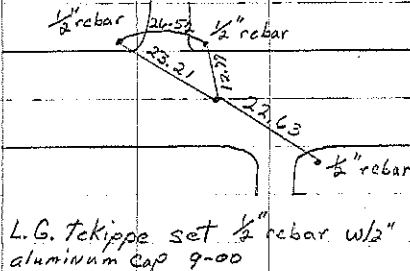
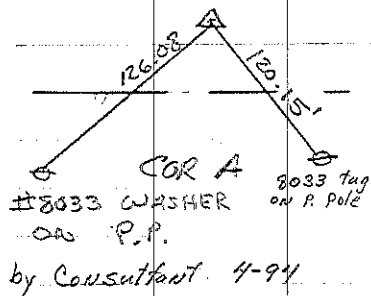
Retired 93 V-56 North Hwy 24



STAPLETON TWP

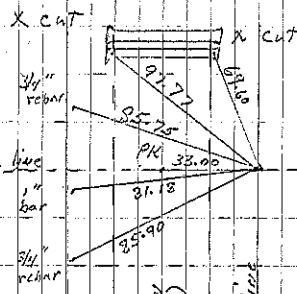
Sec 12

Section 4



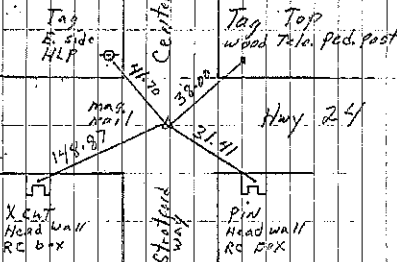
L.G. Tekippe set 1/2" rebar w/ 1/2" aluminum cap 9-00

Cor. E



Cor. C

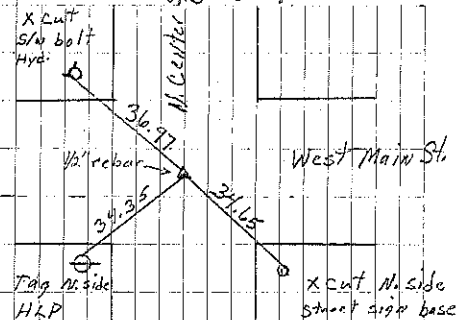
L. Tekippe set 9-6-00 File 2000-1557



Cor. H

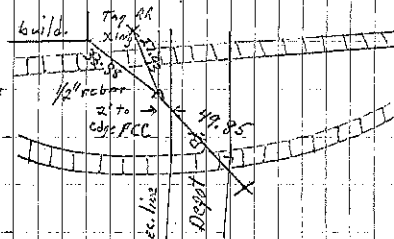
L. Tekippe set 9-6-06 File 2000-1558

Sec 4



Cor. I

L. Tekippe set 9-6-00 File 2000-1559



Cor. J

L. Tekippe set 9-6-00 File 2000-1560

(Sec 4 next Page)

Sec 4-95-11 File 2000-1555 +  
2000-1556

E'

E (A sec. 33  
UPPER S.)

3/62.73

3/80.45

G

P

O

C

1323.40

1323.40

1317.70

2659.02

1317.70

L. Tekippe Fied & Set 9-6-00