

UTICA S

Sec. 13

B. GAS PIPE 4-19-26 GAS PIPE

Found Head Retied 9-22-67
Dug large hole 2' x 2' x 2' PIPE MUST
have been destroyed with relocation of
road and drive construction
Reset by Ties & Plan. 8-15-67

A R.R. TRACK SPIKE

SECTION LINE STRAIGHT BETWEEN
OUTSIDE CORNERS, SHOULD NOT FIND
Chained up from Cor B Sec. 14 SET
PIN FOR CONST. PURPOSE 10-5-59

C Set 1/2" bar w/cap 1-21-98. BK 166 pg. 316

A Dug & Found I.P. Retied 5-11-67
Retied 10-31-60. Dimension
Retied 8-14-67 Dana

Q Set 1/8" bar w/cap 1-21-98. BK 166 pg. 314

X L. Erdman 2-24-03 File 2003-0556

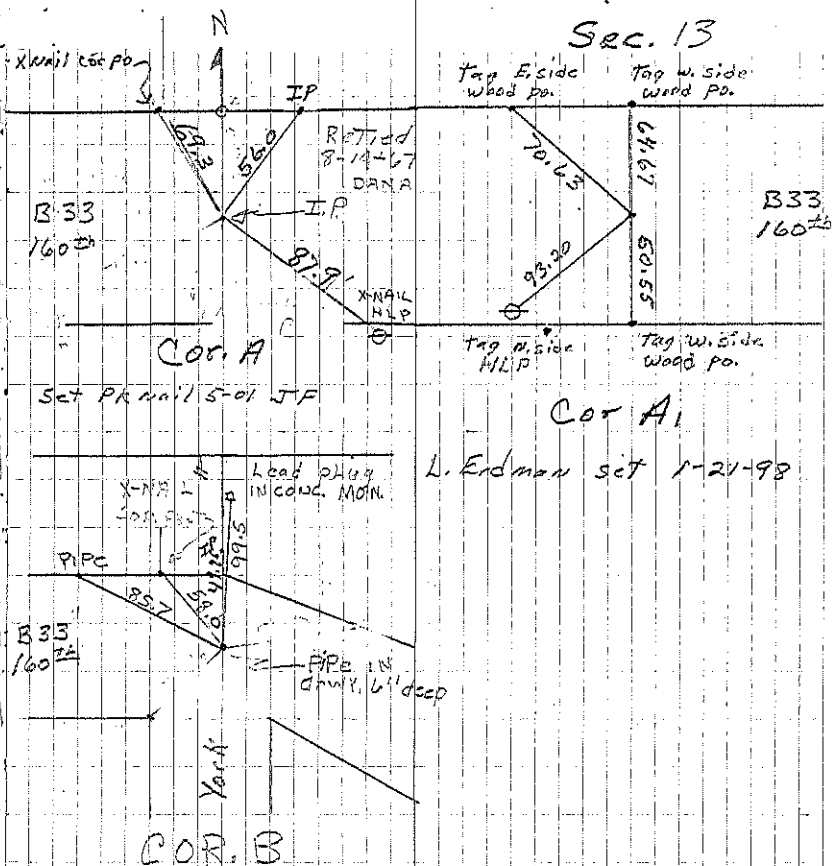
A1 Set PK nail 1-21-98. BK 166 pg. 317

26425

A
RR SPIKE

2643 B1

GAS
PIPE



Reset Pipe from existing
Ties & Plan. information
as original destroyed
8-15-67

Set Masonry Nail at Pot at STA 150+114
see plan 15-68. A Ties also Cor A Sec 13
8-5-68

Retied 11-99 JF-50