

UTICA S

Sec. 15

A Limestone 6-16-25 FOUND Limestone WITH WEDGED SHAPED Limestone STICKING THRU SURFACE OF ROAD  
Found PK nail in mat 8-10-25. File 2005-1675

B IRON PIN 9-21-27 PUT IN CENTER OF BOTH ROADS

C Limestone IRON PIN 1928 Found 1/2" rebar 8-10-25. File 2005-1674

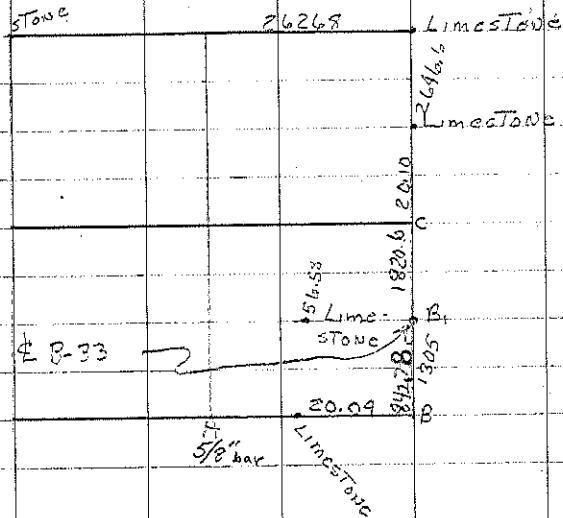
Found post RAISED & Retied 4-11-56  
Set I.P. 25' From E. COR. POST

B IRON PIN 5-15-30 E COR. POST

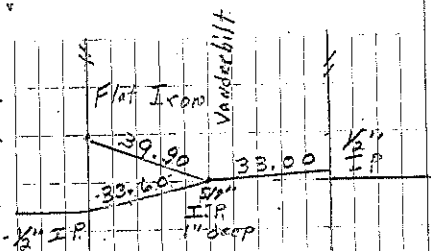
Retied JUNE 10, 1955

Found 5/8" bar 1" deep 10-14-96. BK 162 pg 203

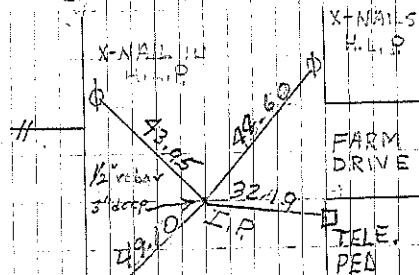
B' Found IRON PIN & Retied 3-31-67



Sec. 15



COR. B  
1955  
dug check tied  
4-10-96  
1-8-62 Ties O.K. PSD  
10/13/42 Ties O.K. JFM + JD  
L. Erdman, retied 10-14-94



COR. C

Retied 4-11-56

Retied 5-1-64

5-7-67

RAISED I.P. TO 25' 96 JFM D. Crawford Retied 8-10-05  
Set Masonry Nail at P.I. at STA 52+22.6

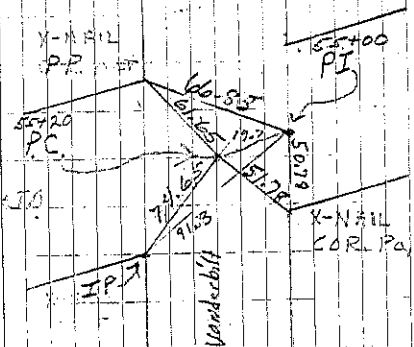
See plan 10-167 For Ties, Set Masonry Nail at  
8-5-68

PT at STA 39+77.9 See plan 10-168 For Ties

Set Masonry nail at P.C. at STA 29+49.9 See

Plan For Ties 8-5-68

D. Crawford Retied 8-10-05



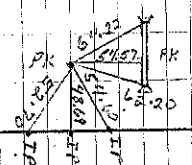
COR. B

Retied 3-31-67

10-13-92

11-99 JFM

Set PK 5-01 JFM



COR. A

Set PK 5-01 JFM