

UTICA S

SEC. 23

C SET IRON PIN MIDWAY BETWEEN  
FENCE COR. MAY 16-28

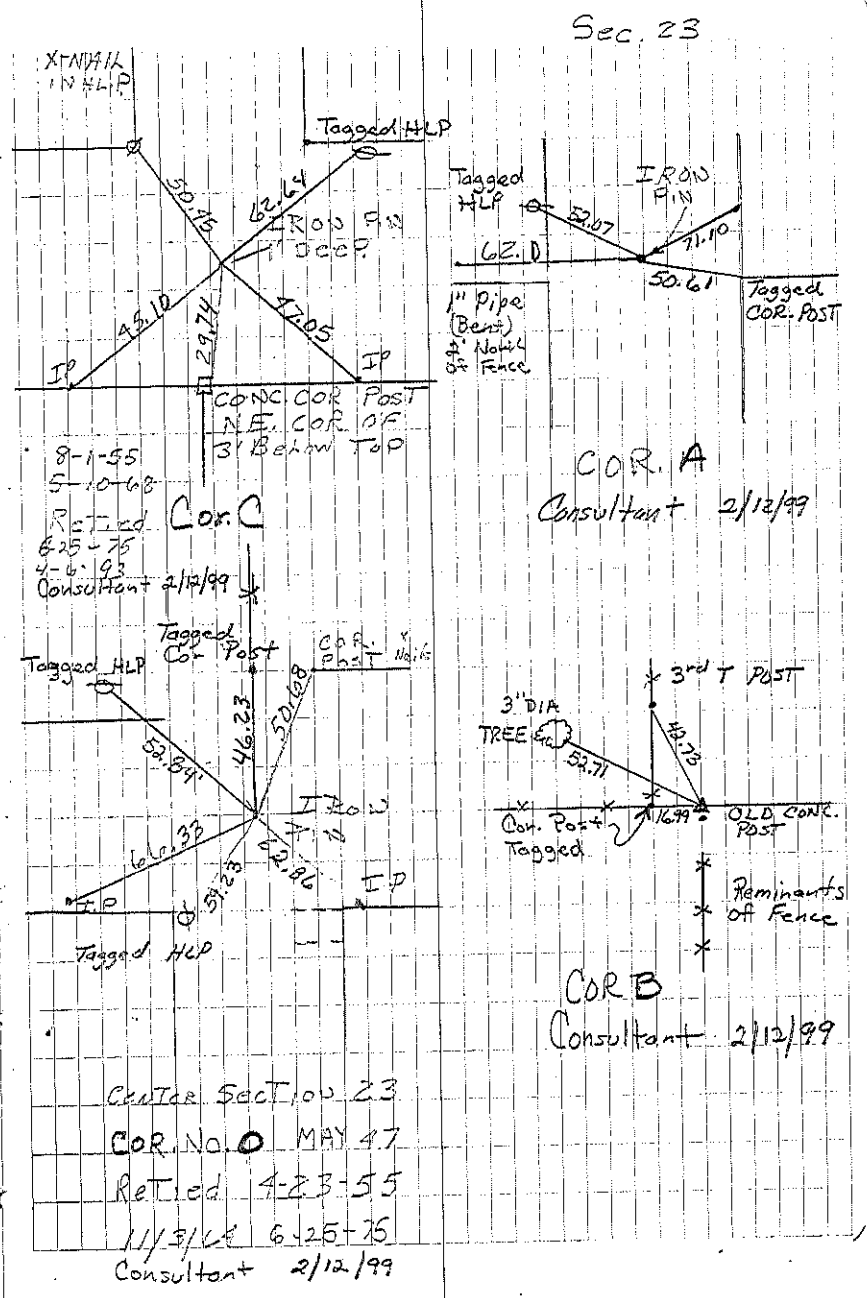
COR. C FOUND I.P.P. 1-55 RETIRED  
Found 60d nail 2-12-99. File BK 170 pg 329

COR. A FOUND IRON PIN & TIED 11-3-64. Found pin  
2.2' deep 2-12-99. File BK 170 pg 330

O FOUND PIN 4-23-55. Found iron pipe retied  
Found 60d nail & set rebar 2-12-99. File BK 170 pg 330

COR. B SET #4 REBAR W/O RANGE REG CAP 4505 AT THE  
BASE OF VERY OLD CORNER POST. File BK 170 pg 329

SET I.P.  
MAY 15-28  
30' FROM N. COR  
PIN IN LINE WITH  
FENCE



Orange Tag  
 L.S. 1060  
 Top of Wood  
 Corn Post  
 11  
 12  
 13  
 14  
 15  
 16  
 17  
 18  
 19  
 20  
 21  
 22  
 23  
 Orange Tag  
 L.S. 1060  
 Top of Wood  
 Fence Post

Orange Tag  
 Top of Wood  
 Fence Post

Cor. E1  
 Consultant 9/16/98

Section

Utica

Cor. E1  
 Consultant 9/16/98

E1