

UTICA S<sup>3</sup> Sec 3  
 x Consultant set 1/2" rebar with cap on E of county road (according to record) & in line with 1/4 section line fence N-S 11/24/92

C<sub>1</sub> Consultant set 1/2" rebar w cap on E county road (According to record) & in line w/section line fence south 11/24/92  
 Found 1/2" rebar w/cap 4-2-01. File 2001-0620

C Consultant set 1/2" rebar w/cap @ existing (OLD) Fence Corner Post. 11/24/92

A Tekippe set 1/2" rebar w/cap File 2002-2125  
 34.46 39.96

40.13

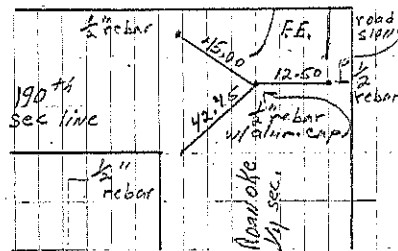
40.08 AX

39.98 C

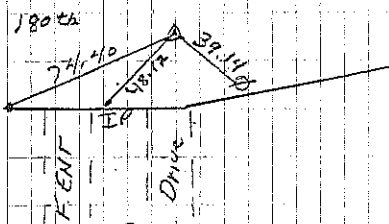
37.86

40.13

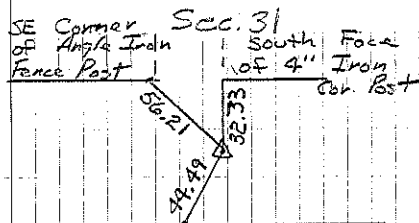
40.16 A



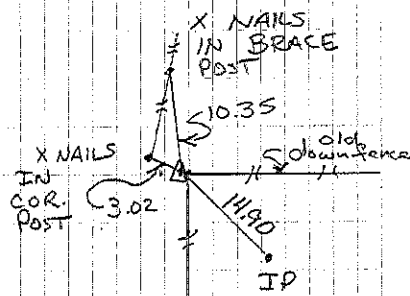
Cor. A  
 Tekippe set 8-29-02



Cor. C<sub>1</sub>  
 11/24/92 by Consultant  
 P. Herald noted 4-2-01



X NAILS in wood Post, 11/24/92 by consultant  
 COR X



Cor. C  
 11/24/92 by consultant