

UTICA S

Sec. 32

COR. B set I.P. Dug large hole.

could not find I.P. set IRON

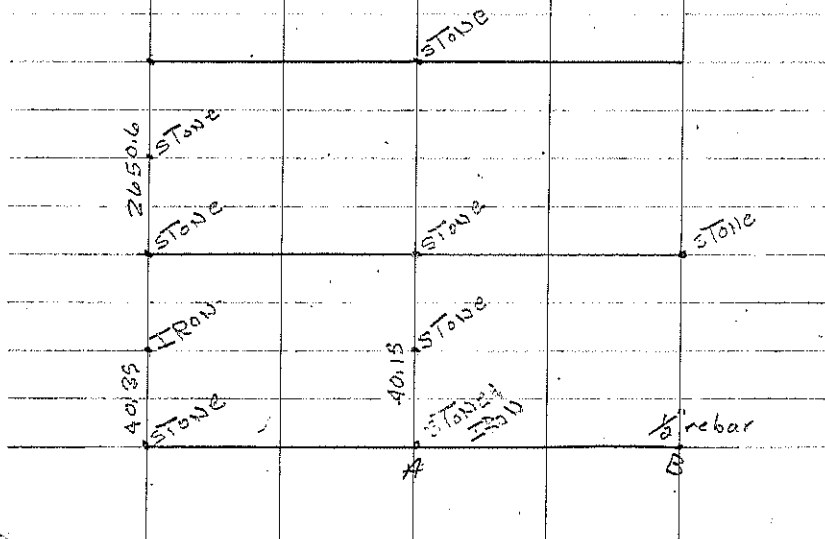
Pin + Tied 7-8-63 J.D

Found 7-2-75 J.D

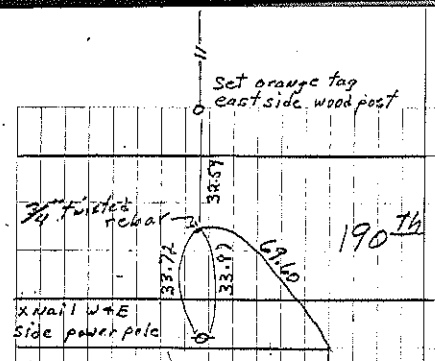
L.G. Tekippe retied 9-00

COR. A P. Herold set 1/2" rebar w/cap 2-5-04

File 2004-0274



Sec 32



COR. B

L.G. Tekippe retied 9-00