

UTICA S

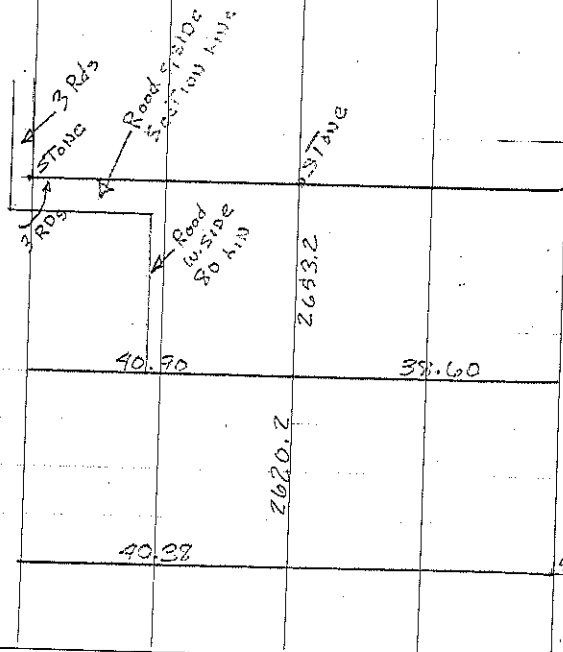
Sec 33

B 2" oak HuB 1929 Lower Protivans (Co Rd)
SET Hub

A Found I.P. & retied 7-1-75

Found & Retied and raised 11/27/00 JFM, JF, TS

C Est. by Consultant 5-13-93
PK Nail Set



DETAILIAN BOOK # 119 Pa. 6

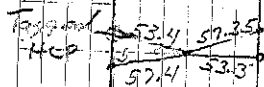
next
See page of 5-13-93
For PI STA 433+57.3
For Project S-183-(16)
also PI STATIONS

439+94.8

470+20.1

478+49.7

Sta 467+64.4



COR C

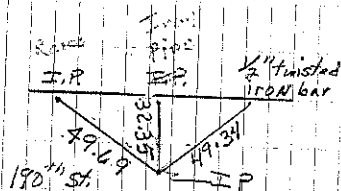
by Cons. 5/13/93
PK Set

Retied 7-1-94 MF+JF

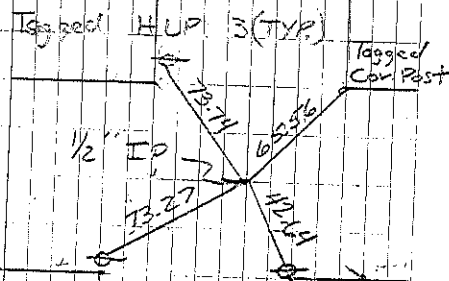
PK SET 10-24-94 MF+CF

Retied 5-22-96 JF+SH

Sec 33



COR A
Consultant 11-95
Retied 11-00 JFM



COR B

Retied 7-13-59

PK SET 11-11-96

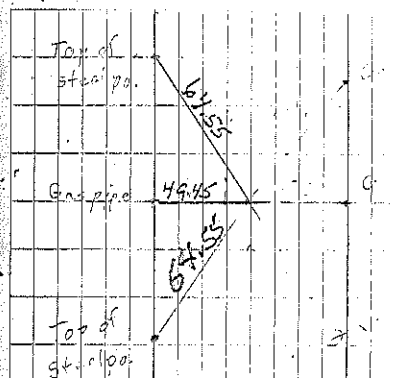
1/2" rebar 6.1 feet East
of East Edge of Pavement
Consultant 5-13-93

Retied 7-1-94 MF+JF
Retied 5-22-96 JF+SH

33-96-11

Project: SN-188(9)--51-19

page 5 of 20 & 6 of 20

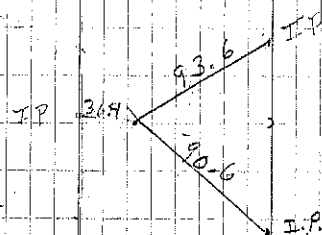


P.I. STA 439 + 4.15

Set Nail in Nail 8-30-67

OK 4-6-72 JF

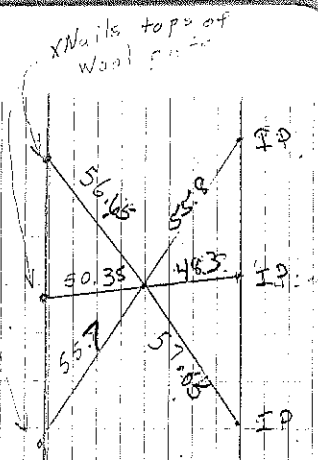
Set PK 10-24-74 MP JF
Retied 5-22-96 JF+SH



P.I. STA 477 + 2.7

Set spike 10' 5' from
edge of nail in IP area

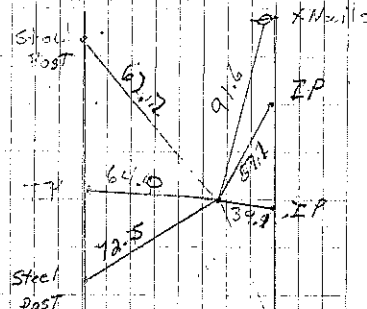
Retied 5-22-96 JF+SH



P.I. STA 439 + 4.15

Set Nail in Nail 8-30-67
6-19-76

OK 4-6-72 JF
Set PK 10-24-74 MP JF
Retied 5-22-96 JF+SH



P.I. STA 478 + 2.7

Set spike 10' 2' from
edge of nail in I.P. area

Retied 5-22-96 JF+SH