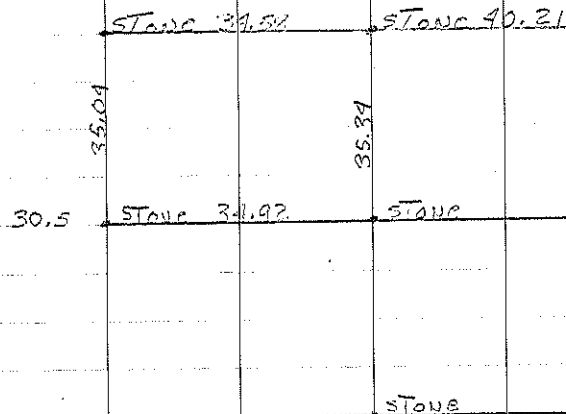


UTICA S SAC. 6

COR. B Set I.P. For CONST. ONLY 5-22-56

COR. C Dug A Hole 32' West From Cor. Post
Found large Boulder ABOUT 3' DOWN
Set I.P. on High Point - Retied
4-17-56
Retied 6-21-61

COR. A Consultant Set 1/2" bar w/cap 5-16-95



SAC. 6

