

UTICA North Sec 22

B 1922 STONE I.P. Found Stone Placed IP

Found X IP 7-2-04. File 2004-1522

D 1928 STONE I.P. Found Stone Placed I.P.

Ret'd 7-29-01 DUNEAN

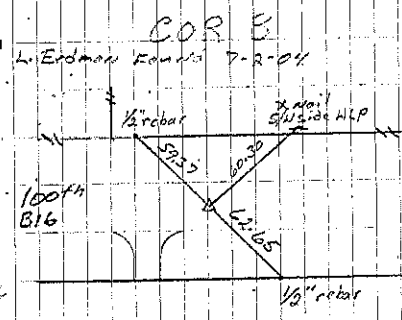
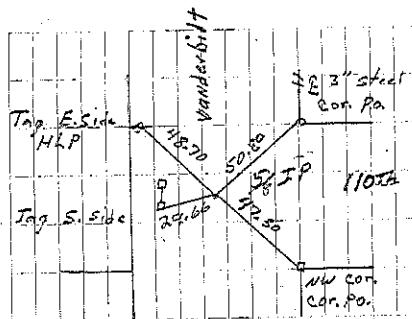
C 1928 IRON PIN SET IRON PIN

A Set Mag nail w/washer 6-8-07 File 2007-1282

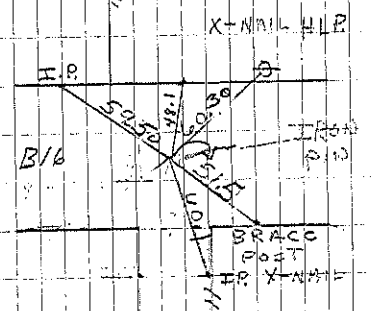
STONE  
E

nail

Sec. 22

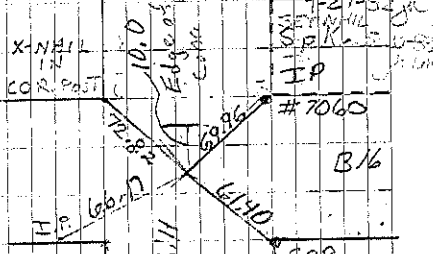


COR. A  
P. Herolt set 6-8-07



COR. E  
Ret'd 5-23-03 DUNEAN

SET CEMENT NAIL IN MAT.  
OK 4-5-32 OK 8-31-07  
10-20-40



COR. D  
Ret'd 7-14-57  
Ret'd 7-29-01  
SET CEMENT NAIL IN MAT  
8-31-07  
OK 4-5-32 OK  
10-20-40  
7-27-80  
SET NAIL IN MAT STAINING LMA

CONS. 9/16/03