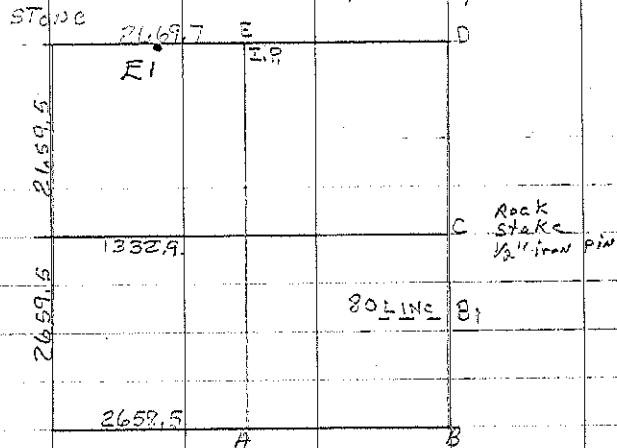


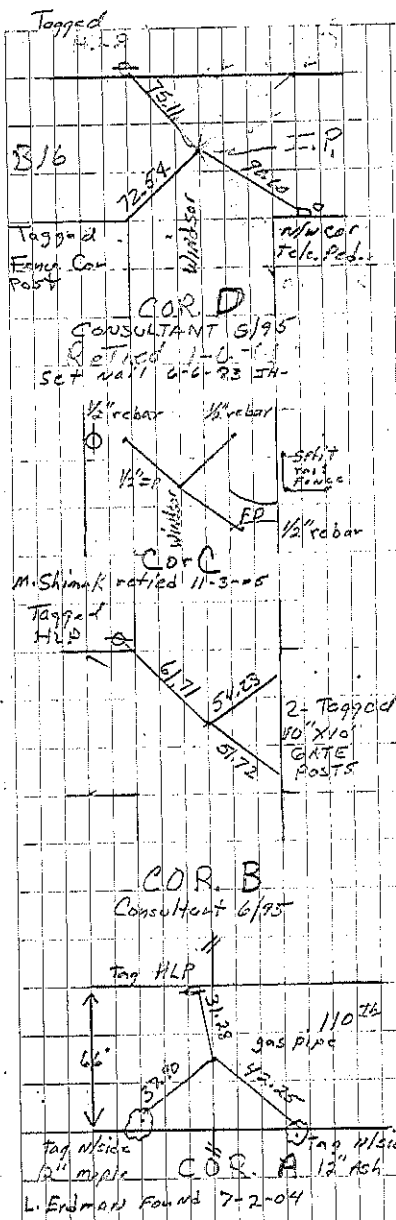
Utica North

Sec. 23

- B. Stone 6-7-54 Retied I.P.
- B. Stone 4-21-25 Limestone with
old Gr. 1" x 4" on N.S. On 1" Below
Consultant 6/95
- C. Rock 4-21-25 3" x 1" size Rock
with 1" x 2" STAKE on N. Side. Set
I.P. above 1954. Found 1/2" iron pin 11-3-05.
File 2005-2438
GAS
PIPE 4-21-25 Found & Retied
GAS PIPE 1951 Co. ENGL.
Retied 1-6-61 J.D.
GAS
PIPE 1928 Fused GAS PIPE
Found 7-2-04 File 2004-1593
- E. I.P. 1930. Set IRON PIN
Retied 7-24-61 J.D.
- E₁ Consultant 9-16-98 Mag Nail w/s.s. Washer



SET Cement NAIL
IN MET 9-1-67



See after Sec 36
For add. Ties

N. Sec. 23

