

UTICA NORTH  
COR. B STONE IRON PIN 1927 FOUND STONE Phase IRON

Found PIN Retied July 16, 1954

Found IRON PIN Retied 7-3-64

check ties 6-10-66 3-4-74 CONSULTANT SETS  
STONE Found STONE & BRICK Retied.  
BRICK 8-22-57 CONSULTANT SETS

COR. C Consultant found 1/2" rebar w/cap 2-10-05 File 2005-0260

COR. A set IRON PIN July 16, 1954. FOUND  
Retied 8-2-60 O'NEILL 7-3-64 9-9-09  
Set PK

N. End Bridge 136 ET. to FC of Sec. 8-10-64  
COR. C 25-99-12

COR. G Consultant set 1/2" rebar w/cap 2-10-05. File 2005-0260

COR. O Found PIN & RAISED PIN also

Retied same PK with cap set in bridge  
Reference BK 155 pg. 177. New bridge 2004; cut x in  
deck 10-24-04. Retied. Consultant found 2-10-05. File 2005-0260

COR. B' Consultant set 1/2" rebar w/cap 2-10-05. File 2005-0260

Retied 2-6-78 Stone

7 rds. N. CENTER  
40 FT

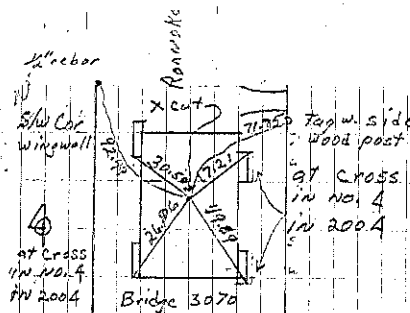
Row  
1 rds. N. CENTER  
40 FT

STONE STONE  
19.99 19.99  
STONE  
BRICK

SET  
5/8" iron  
APRIL 4-37

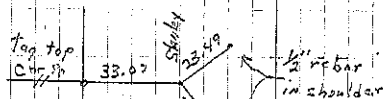
1/2" rebar

STAKE STAKE FOUND  
19.90 19.90



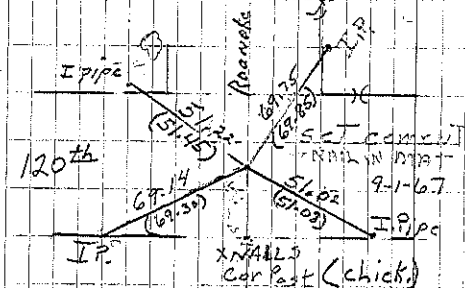
COR. D

Tied 10-26-04 JF & MT  
Mishimak retied 2-10-05



COR. B'

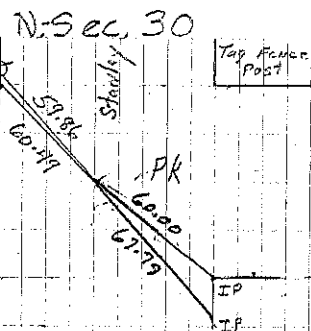
Mishimak set 2-10-05



Retied 10-01 JF  
Mishimak retied 2-10-05  
Set PK 9-9-09 JF & MT  
COR. A

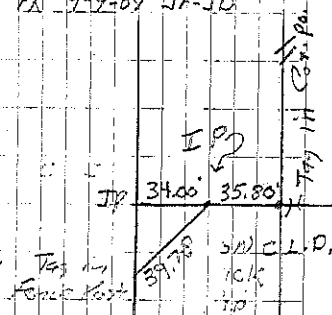
MAP of Tanco shows

5/8" COR. AT STA. 320+33 1/4-1/4  
5/8" COR. AT STA. 293+88 Sec. line  
20.45 Flag top  
SW COR. AT STA. 271+49 Wood post



COR. B

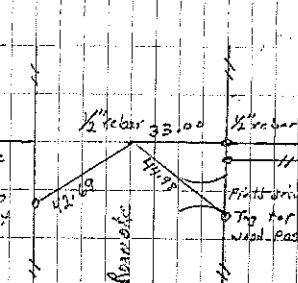
9-1-67 6-20-74 6-22-80  
9-18-90 consultant sets  
Set PK 9-9-09 JF & MT



COR. C

8-27-57

Consultant SETS



COR. X

Mishimak retied 2-10-05