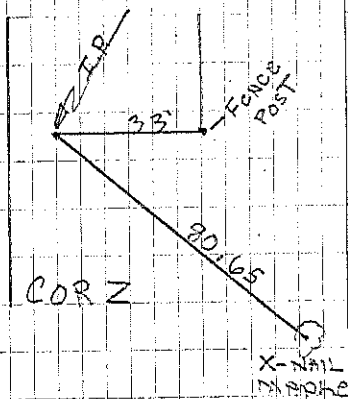
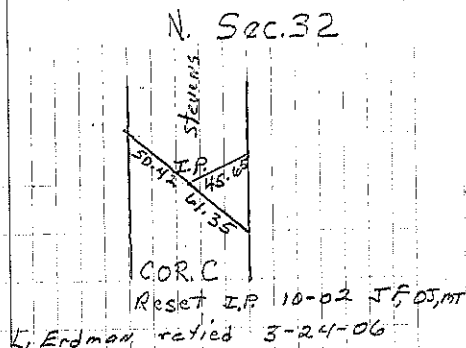
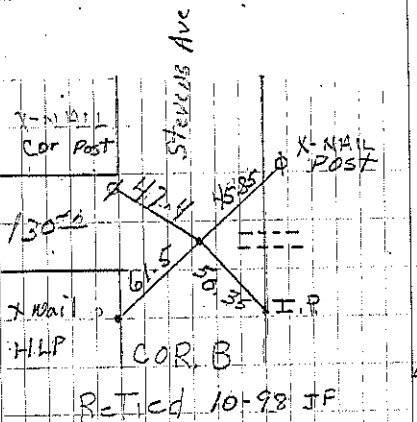
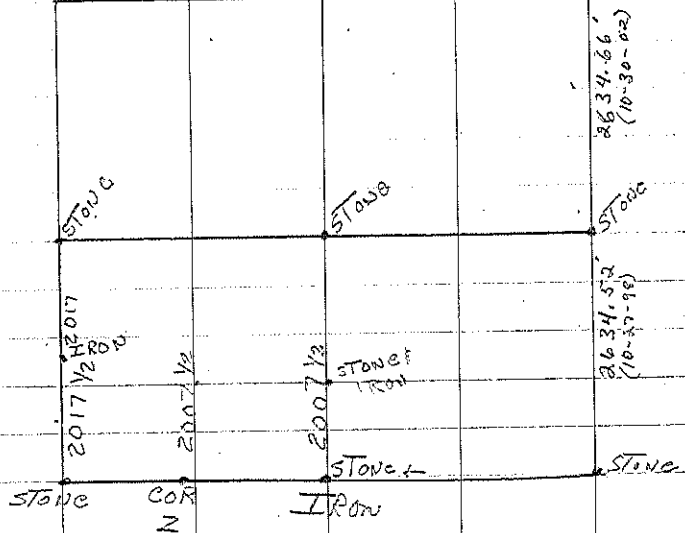


UTICA NORTH

- A Found Stone & IRON Pin 5-16-34  
 22.8' from S. Pole  
 Dug hole - could find I.P. 4-12-61 J.R.  
 Dug a 6' x 4'5" No. Pin 5-9-61
- B Found stone placed bolt with  
 round head outer stone ReTied  
 June 2, 1956

C Set June 5, 1956 Chained  
 Total distance split fence  
 Reset IP, split mi. Oct. 23, 1998. Reset IP w/cap 10-02  
 Found IP w/cap 3-24-06. File 2006-0620

B Found I.P. 6" below surface  
 ReTied 4-12-61 J.R. Found round head bolt  
 11-11-97. BK 145 pg 418



CONSTRUCTION POINT 1961  
 SET 1700 33' FROM  
 SOUTH COR POST  
 EAST SIDE OF DRIVE

40' 40' HUB  
 Top Piece  
 OF IRON  
 POLE  
 CONSTRUCTION ONLY