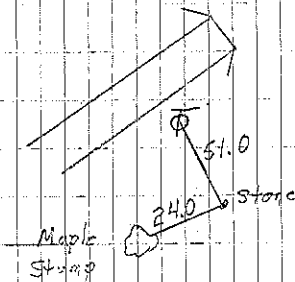
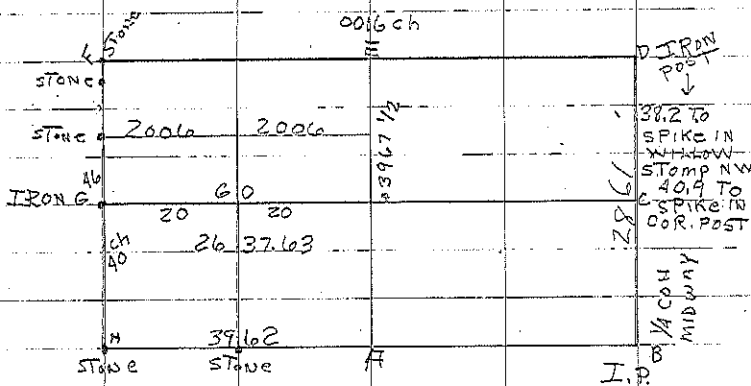


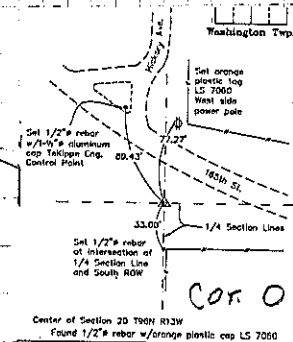
Washington Sec 20

- A Found Stone with IRON PIN
5-29-54 Retired 11-10-77
- B IRON PIN 33' To cor Post N&S
Found IRON PIN June 13-49, Re-
referenced. 11-10-77
- R Stone o.w. back 7-11-1926 large
Stone Placed Two Small Stone
with IT and IRON PIN
- S.7 Stone o.w. back Found Stone placed
with IT IRON PIN & Hub
(o)

9-16-54 Found Stone with I.P. bent over
TOP POINT OF STONE. Placed NEW
I.P. & re-tied.



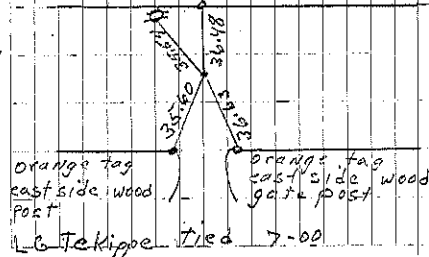
Cor. G0



Cor. O

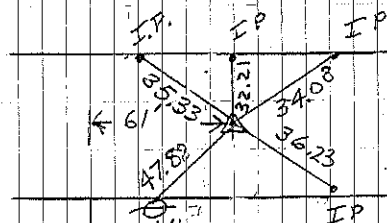
Tekippe found 1/2" rebar 7-00

Set orange tag east side P.P.O.C. orange tag east side Cor. post

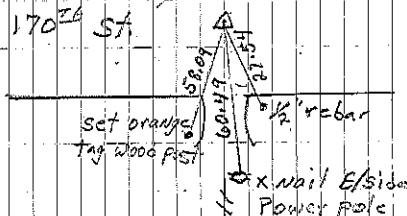


Cor. C

Sec. 20



Cor B
CONSULTANT 5/28/96



Cor A

LG Tekippe tied 7-00