

Washington S  
 A Stone Found stone point up and  
 set I.P. 1.2' E of stone end  
 on line 1947

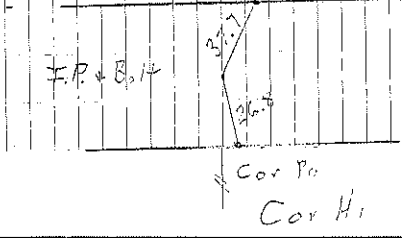
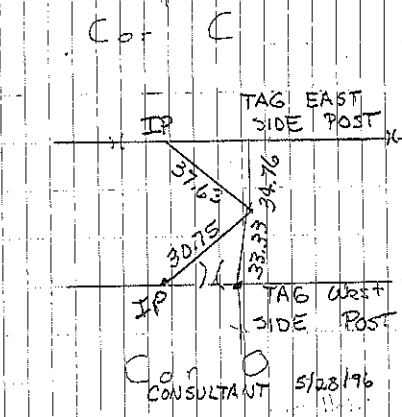
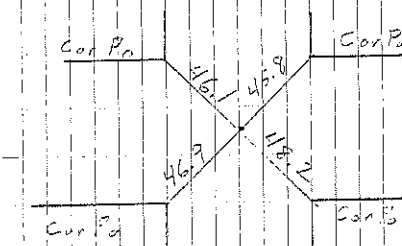
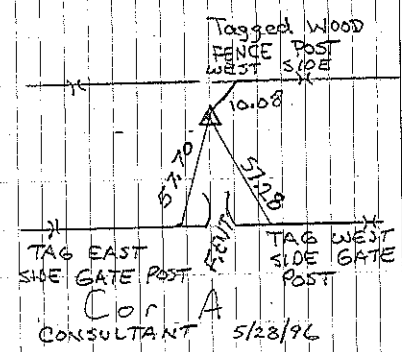
B IP 6-17-30 Found stone I.P. + Hub  
 11-13-56 Found IP 11-19-92 RA.

C I.P. 5-17-30 Found 11-13-56

D Stone Found

Cor O Retied 5-29-54

A<sub>1</sub> Not a land mark. Set for  
 Const. E only for LCRS-9.73  
 1973 Kings  
 Consultant 5/28/96



Sec 21

