

Washington S

A Set IP on straight line midway
between SE Cor & SW Cor,
1-11-55 Const. Only

B - Consultant Set 1/2" IP 6/28/93
IP 8-10-55, Set PK nail 9-16-04

C 1886 Book I Page 2
Found Blue Stone & set IP 11-1-67

E 1886 Book II Page 2

C Found IP + Retied 2-28-90 RA

1-11-55 5331.2' A
40.31

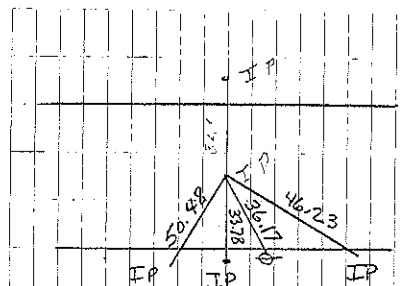
IP

2006 IP

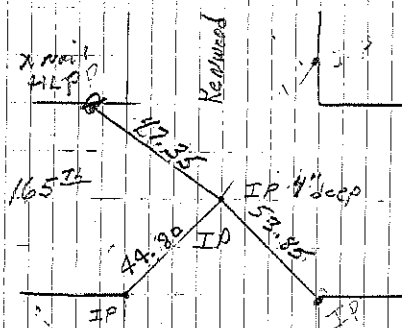
Iron
stone

B
PK
IP
stone

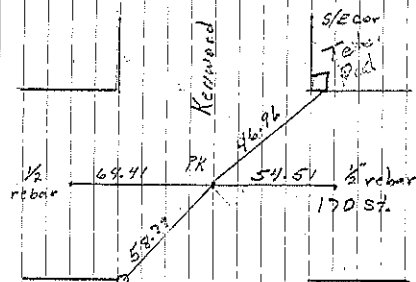
Sec 23



Cor A
Set 1/2" IP Consultant 6/28/93



Cor B
Retied 3-17-81
Retied 5-23-83 JEM
Set nail in mat 7-28-83
Consultant set 1/2" IP and retied
6/28/93
Set PK nail 9-18-04 JF-JD



Cor C

Retied 3-17-81
Retied 5-23-83 JEM
Set nail in mat 7-28-83
Consultant set 1/2" IP and retied
6/28/93
Set PK nail 9-18-04 JF-JD