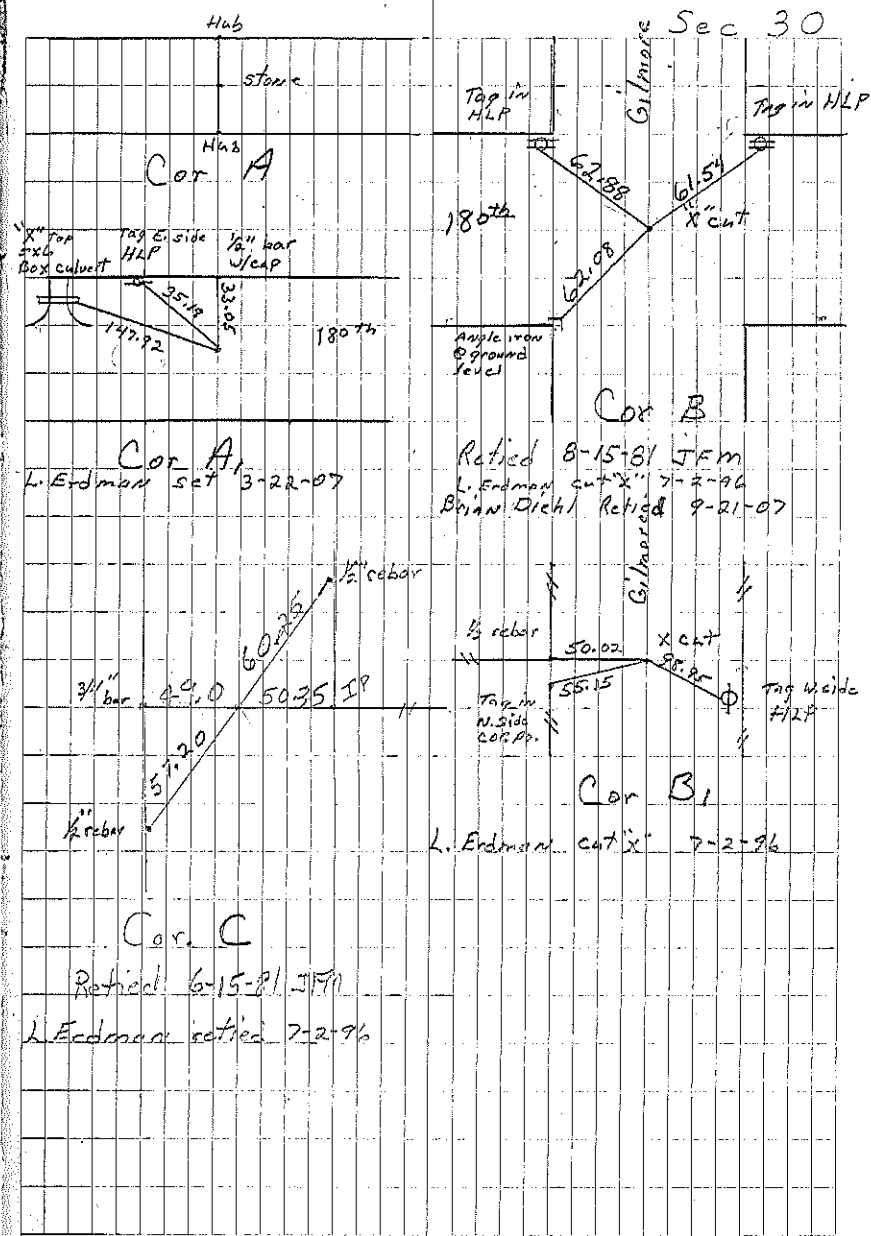
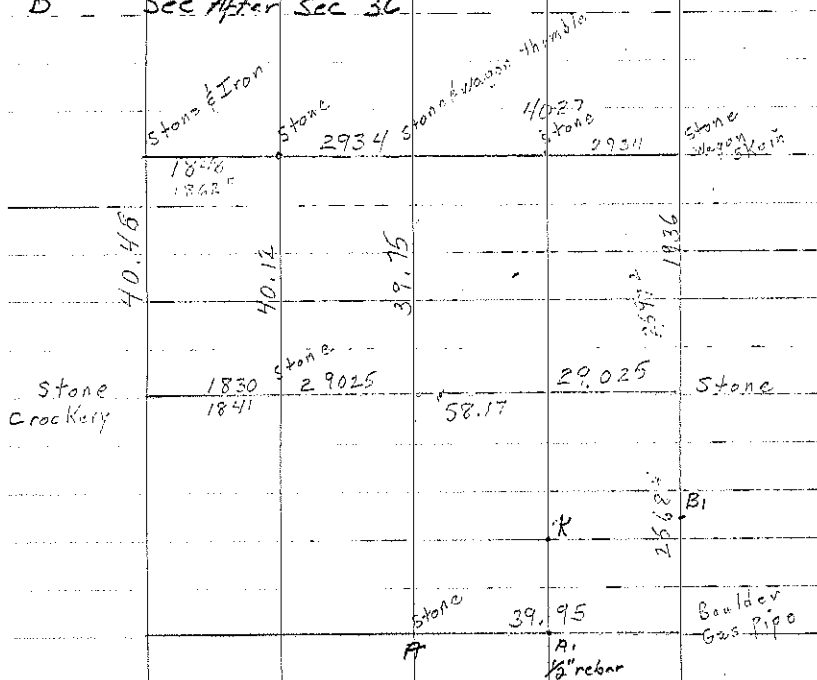


Washington S.

- A Stone
- B Iron pin 1954. Set nail in AC mat 8-12-71
Cut "X" in PCC pavement 7-2-96. Book 161-234
- C Stone 1954. Set nail in AC mat 8-12-71
Found PK nail 7-2-96. BK 161 pg 235
- B₁ Cut "X" in PCC pav. 7-2-96. Book 161 pg 233
- K Set 1/2" bar w/cap 7-2-96. BK 161 pg 236
- A₁ Set 1/2" rebar w/1 1/2" cap 3-22-07. File 2007-0573
- B See After Sec 36



Washington N

COR E Dug hole and found stone
19-97-13 3" below surface which was
33' North of old Corner post
to the south Set IP

Cor B Sec 30-96-13

Found "X" cut in PCC 9-21-07 File
2007-1910

