

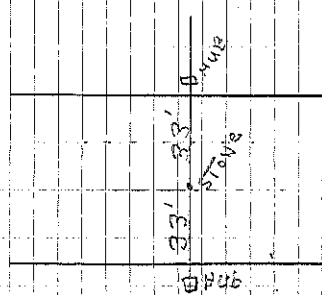
Washington S.

A Stone  
B Stone & STAKE

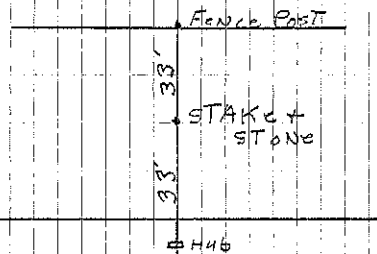
	STONE+BRICK	STONE	STONE+IRON PIN	STONE	Stone
	20.24	20.24	20.24	20.14	
	3384		3356	3315	2205.1
	STONE 2059	STONE 2064 2059	STONE 2036	STONE 2033	
40.38	41.10	3998		2668.5	
	STONE 4104		STONE 404		STONE

X set  $\frac{3}{4}$ " steel bar 11-5-02 File No. 2002-2748

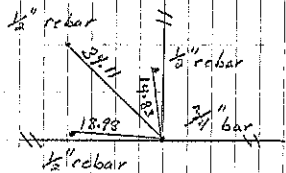
Sec. 5



COR A



COR B



COR. X

L. Erdmann. set. 11-5-02