

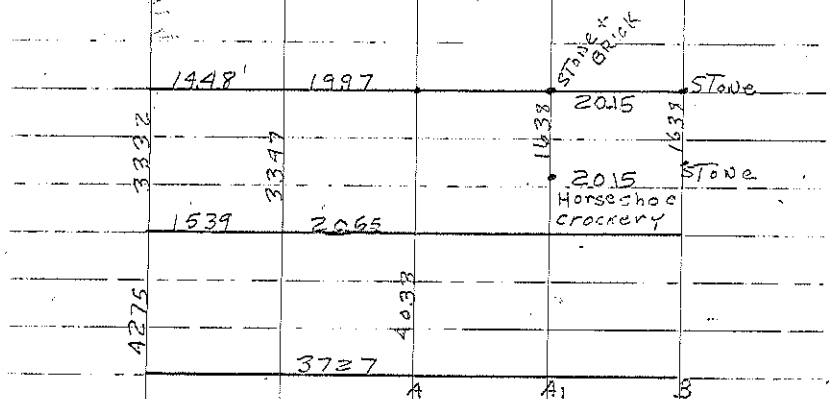
Washington S.

A Stone 12-1-24 Blue Boulder-Sharp
No Field
Back notes Edge Found Hub Rock has post point

on East and set iron pin 1954 W side

B Stone 1954 IRON PIN WITH STAKE
line for Power Co.

C I.P. 1924 SPHT Fence Line
for Power Co Retied 1954



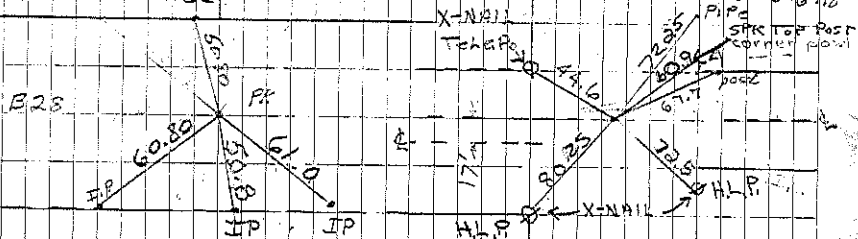
A1 Set PIN 4-17-63 R.C.D.

A Found PK nail 2-20-92. BK 163-343

set Nail in AC mat 8-11-71

Sec. 6

PK 2.6 West
of South Fence

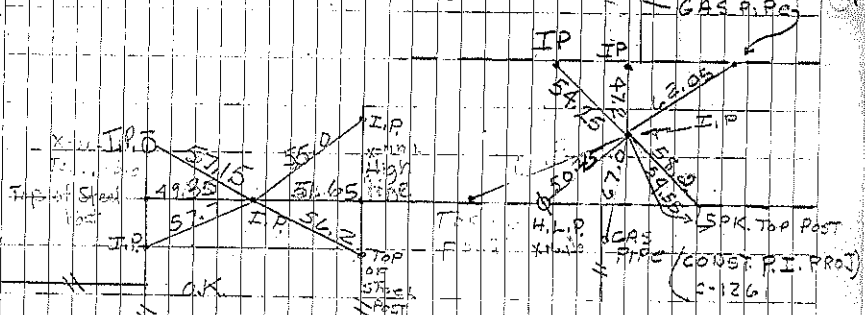


COR A

Set nail in AC mat 8-11-71
Set PK 6-27-80
L Endment retied 2-20-92

COR B

Set Nail in AC MAT 8-11-71
Retied 6-27-80
Set PK 6-12-81



COR C

Set Nail in Mat 8-11-71

Retied 6-16-81 JFM

CONSULTANT 11/2/92

COR A, STA 64+17

POINT ON R AND CONST

P.I. DEF. = 0.44 RT

Set NAIL in AC MAT

8-11-71

Retied 6-27-80

Set PK 6-12-81

Retied 8-26-92 CSM