

Washington S.

C IRON PIN 1924 SPLIT Fence line
For Power Co. Re-established 1951
when was built

B Stone & 1924 2 small stones found
together. only evidence found. Drive IP
with stone line for fence line. Found iron in
1951 & drove new iron pin.

Cor A by L.P. ERDMAN
Fd. 1/2" bar 7-14-92 BK 150 pg 219

C Cut "X" in PCC 2' east of E of V18 2-20-97.
BK 163 pg 342

O Set 1/2" bar w/cap 4-2-92. BK 164 pg 14

X Set 1/2" bar w/cap 4-2-92. BK 164 pg 13

Y Used fence cor. for w/cap 3-22-92. BK 164 pg 12

x

y

o

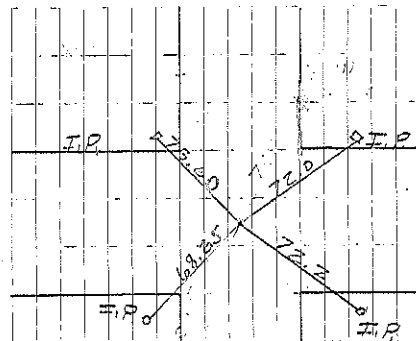
c xcut

A
1/2" bar

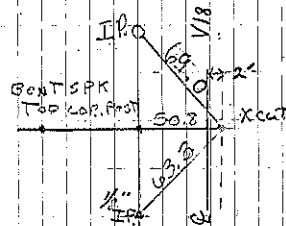
(1990)
2631.9

(1970)
2617.1

B



Cor B
Set Nail in Mat
L-8-12-71
Retied 6-17-76
Consultant 6/17/76

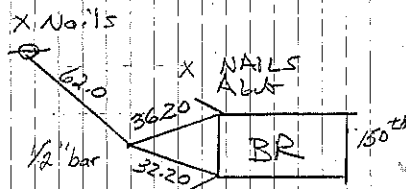


Cor C

Ref. Set with TRANIT
Set nail in AC mat 8-12-71
Retied 6-16-81

L. Erdman cut X 2-20-97

Sec. 7



Cor A