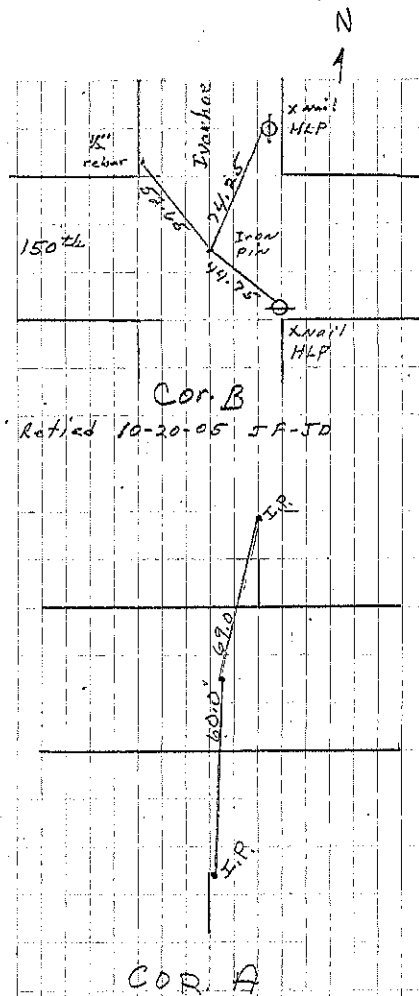
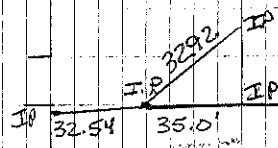


Washington Co.

- B. Found stone with bent iron  
Piv. reset IR on top of stone  
MAY 31, 1960. Found iron pin 10-20-05
- C. SET IRON PIV midway fences  
26' from E cor. Post.
- A. Found pointed stone N line with  
South fence. SET IRON PIV on  
Top May 31, 1960.
- C. Found IRON PIN & DROVE ANOTHER PIN  
ALONG SIDE TO RAISE 11-5-64 JERRY



Sec. 9



COR. C  
11-5-64  
Found I.P. and  
Retied 8/22/95 RA