

Washington N

Refer To Survey Notes 1886  
Book #1 Page 6.

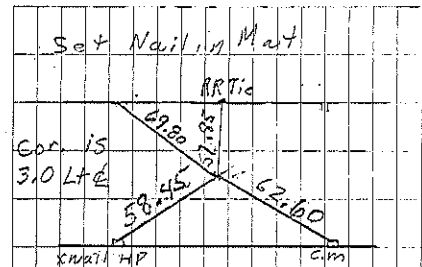
- A I.P. Midway between Fences
- A Plug in back Top I.G.H.C. 1950
- C Found Stone 25' from West Post  
I.P. 6-10-53

NE. Cor. 38<sup>th</sup> To Nail in. w/ low STUMP  
NW. 40<sup>th</sup> To SPK. IN COR E. ST.  
NE

B Plug in. BlackTop I.S.H.C. 1950

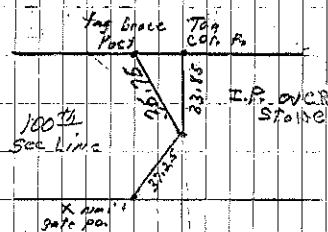
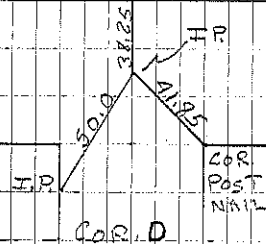
E Found large Stone with I.P. beside  
IT about 2' below road. Set I.P.  
OVER high point of ST. and ReTied  
3-26-58. Found 1000 nail w/cap. 3-20-07.  
File 2007-0520

Sec. 20

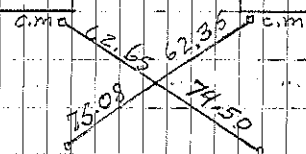


COR A Feb. 1971  
Consultant retired 9/20/99  
Retied 7-8-97 JF+CG  
Set PR 4-24-98 JF+TA  
COR D. Dug large hole.  
unable to locate corner.  
Set T Fence from road So.  
and Fence east & West.  
9-18-58

NAIL IN BRACE POST



COR E 3-26-58  
Retied 11-20-03 JF+MC  
Pillerd. retied 3-20-07



COR B

Feb 1971

Set Nail in Mat  
Cor is 5.0 LTR  
CONSULTANT 2/15/93  
Retied 7-8-97 JF+CG  
Set PR 4-24-98 JF+TF