

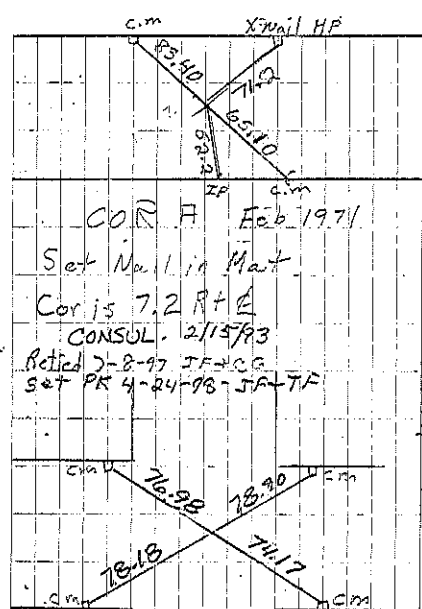
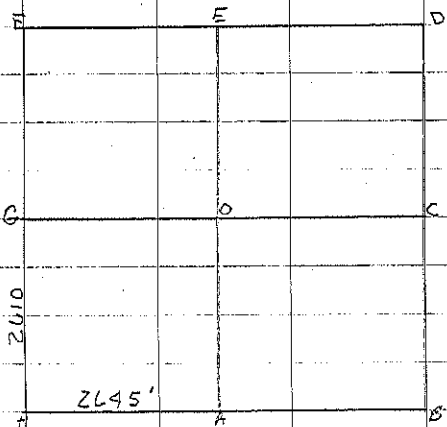
Washington N
 NE COR 'OAK' hub Ret'd by Gish
 (Cover rock) 3-12-52

C. barge. Flat Top rock 5-29-25
 Set 2x2 hub on S. side 2x2
 STAKE W. 32.0 E. 33-0

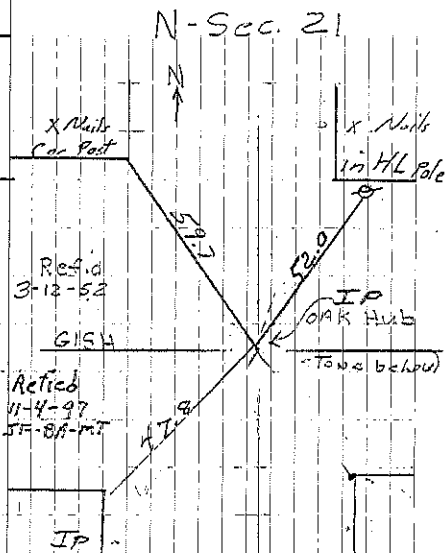
B. Found rock about 6" DIA. 1.0'
 bang set on end
 Blazed Tel. pole & NAIL S.W.
 42.9. NAIL IN COR. POST NW 45.4

D. Found IP & retied 3-21-90 R.A.

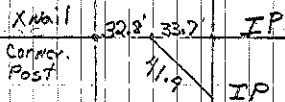
IRON Fence Post 37° to
 SE COR. Post 35.2 to
 SW Telc. Pole



COR. B
 Set Nail in Mast
 Cor is 1.9' LT &
 Retied 7-8-97 JF+CG
 Set PK 4-24-98 JF+TF
 Consultant 11/1/99



NE. COR. Sec. 21
 Cor D



COR. C
 Retied 11-4-97 JF+BA-MT