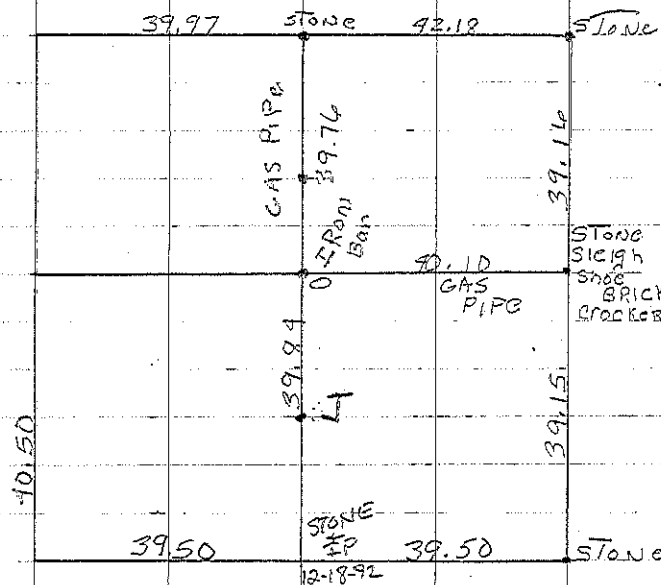


Washington N

B Stone 29' From Cor Post To West. Stone + IP
22³ To E Post

C Found Sleigh shoe with Stone on W side 30³ From E Post.
29³ From Iron Post West

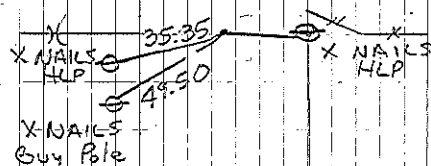
A Consultant found stone @ Existing Fence Intersection 6" Deep set 1/2" rebar



CORO Consultant Found IP and tied in 12/26/95

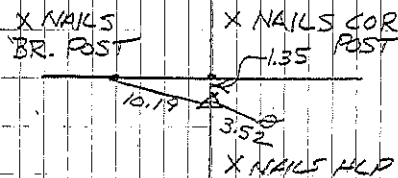
Cor J Consultant Set IP and tied in 12/26/95

N. Sec 27



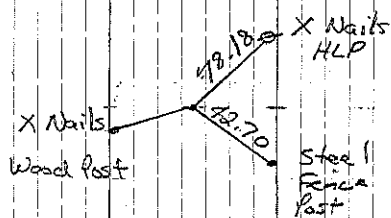
COR. B

by Consultant 12/18/92
" " 7/21/93

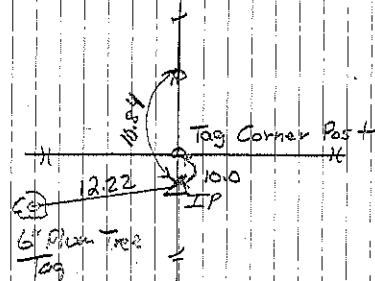


COR A

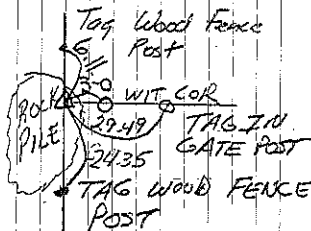
by Consultant 12/18/92



by COR C
by Consultant 12/18/92



Consultant 12/26/95



COR J

Consultant set wit Cor. and tied in 12/26/95