

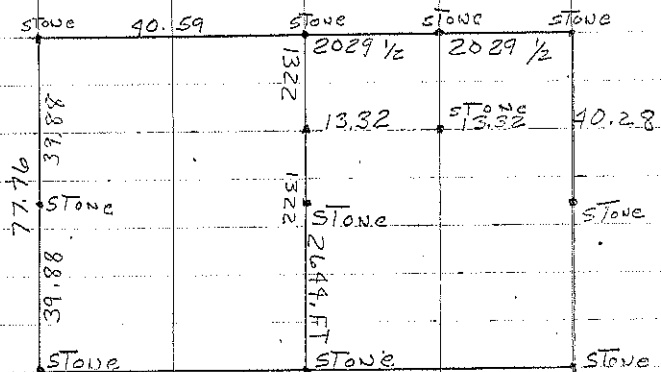
Washington N

B Found Red stone 36.6 S.E.
29.3 TO Post W
Found 1" sp. bar 1-4-94. BR 154 pp. 10

Found and re-referenced MAY 24,
1950 Found 10-1-71

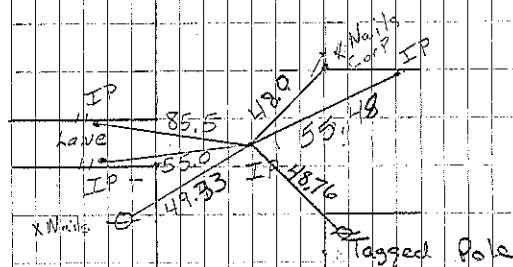
A Stone

C Stone. Found 1/2" twisted pin 1-4-94. BR 154 pp. 10

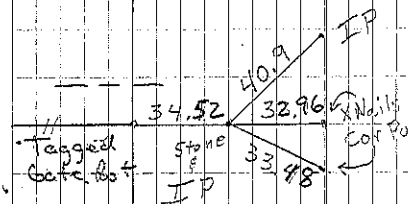


C Found Pointed blue stone midway
between fences and in line with fence
West & set T. P over high point
10-1-71

N- Sec. 36



Cor. IP
Retied by Consul. 4/194



Cor C

Retied 1/4/94 by Consultants