

Chickasaw Co. Recorder
 Cindy Messersmith
Fee Book 2014-1708
 12/03/2014 @02:50PM
 SEC SEC COR CERT # Pages: 1
 Book: Page: Total Fees: \$7.00

Prepared by & Return to: Herold - Reicks Surveying, 10 East Main Street, New Hampton, IA 50659, Ph. 641-394-2725

UNITED STATES PUBLIC LAND SURVEY CORNER CERTIFICATE

Land Survey Monuments situated in Section 4, Township 94 North, Range 14 West of the Fifth Principal Meridian, Chickasaw County, Iowa. 1. and 2.) Previously not recorded in the County Recorder's office.

This certificate is being prepared in compliance with Iowa Code Chapter 355.11 because:

- 1 & 2 There is no certificate on file for this corner.
- There are no longer three valid ties of record.
- There are changes to reference ties of record.
- There is change of monumentation of record.
- To clarify description of record monument (ties).

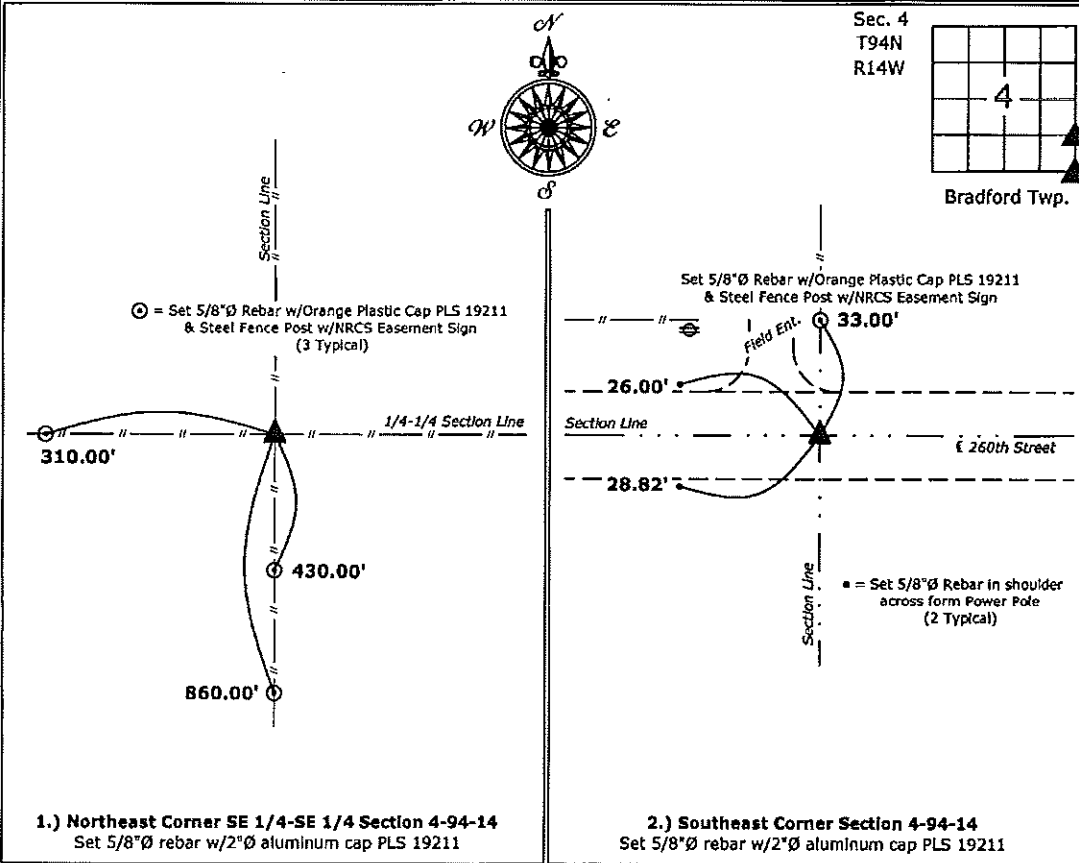
Monument Description and Remarks:

1.) Northeast Corner SE 1/4-SE 1/4: Set 5/8"Ø rebar w/2"Ø aluminum cap PLS 19211 equidistant and online between the East 1/4 and Southeast Corners of Section 4.

2.) Southeast Corner: Set 5/8"Ø rebar w/2"Ø aluminum cap PLS 19211 at the intersection of the centerline of 260th Street and a possession line fence from the North. Utilizing information obtained from the County Engineers office in Surveyor's Record Book, Pg. 139.

PLAN - VIEW

(Show a minimum of three reference ties to durable physical objects, relevant monuments and physical conditions that will enable recovery of the corner.)



I hereby certify that this land surveying document was prepared and the related survey work was performed by me or under my direct personal supervision and that I am a duly licensed Land Surveyor under the laws of the State of Iowa.

Kirk D. Reicks 12-3-14
 Kirk D. Reicks Date:
 License number 19211
 My license renewal date is December 31, 2014.
 Sheets covered by this seal: Individual sheet only

List Corners to be Indexed

Corners	Section	Twp.	Range
NE-SE-SE	4	94	14
SE	4	94	14

Project Number: 2014-215
 FB: Chickasaw County 7, Pgs. 6-8

File: S:_CSD Projects\County Control Systems\CHICKASAW\CHICK-38.dwg, 12/2/2014 5:21:40 PM