

Section 3-94-14
 As referred to in
 Eng. Tie Book

Chickasaw Co. Recorder
 Cindy Messersmith
Fee Book 2007-0733
 04/16/2007 @ 11:43AM
 SCC SEC COR CERT
 Book: Page: # Pages: 1
 Total Fees: \$7.00

Herold - Reicks Surveying, 25 1/2 East Main Street, Suite 204, New Hampton, IA 50658, Ph. 641-394-2725

UNITED STATES PUBLIC LAND SURVEY CORNER CERTIFICATE

Land Survey Monuments situated in:
 Section 310, Township 94 North, Range 14 West of the Fifth Principal Meridian,
Chickasaw County, Iowa. Previously recorded in 1.} None
 in County Recorder's Office. 2.} Bk. 169, Pg. 465

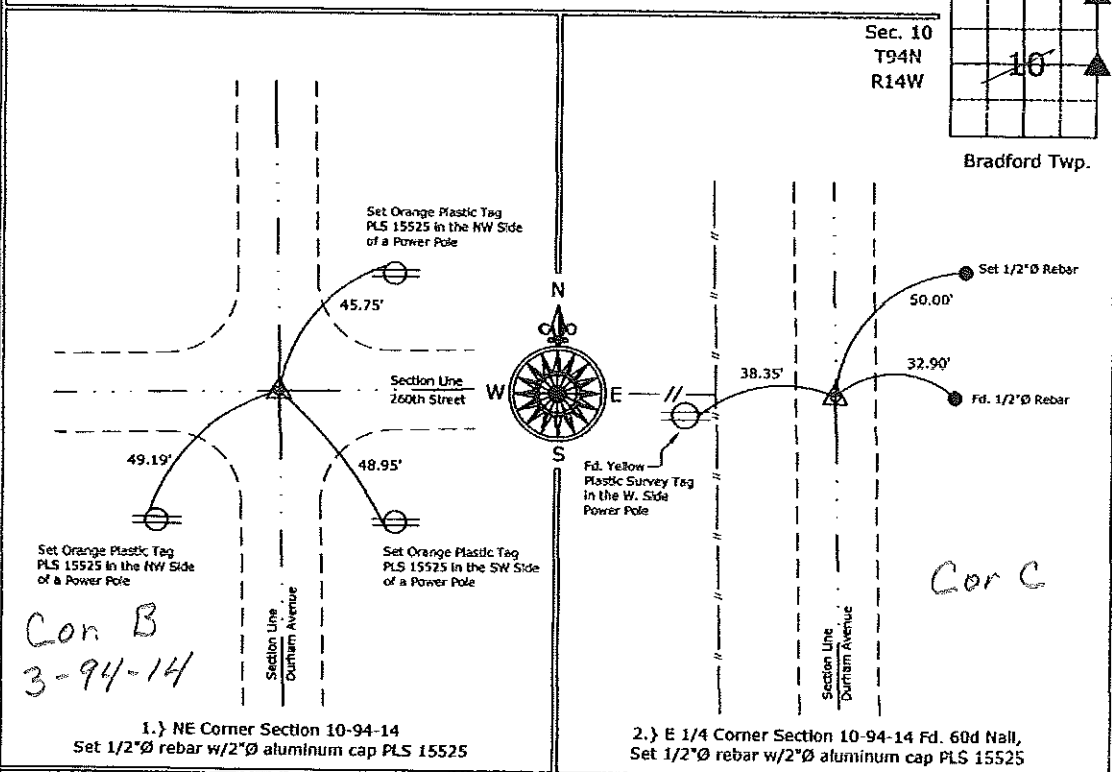
(Show reason for preparing this certificate, the evidence and detailed procedures used in establishing the corner positions and monumentation found or placed.)

Monument Description and Remarks:

- 1.} NE Corner Section 10-94-14, Set 1/2"Ø rebar w/2"Ø aluminum cap PLS 15525 at the center of the intersection of 260th Street and Durham Avenue.
- 2.} E 1/4 Corner Section 10-94-14 Fd. 60d Nail from the previous Section Corner Certificate, removed and Set 1/2"Ø rebar w/2"Ø aluminum cap PLS 15525 as a more substantial monument.

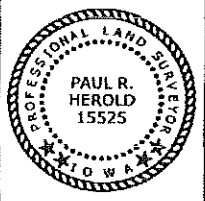
PLAN - VIEW

(Show a minimum of three reference ties to durable physical objects, relevant monuments and physical conditions that will enable recovery of the corner.)



1.} NE Corner Section 10-94-14
 Set 1/2"Ø rebar w/2"Ø aluminum cap PLS 15525

2.} E 1/4 Corner Section 10-94-14 Fd. 60d Nail,
 Set 1/2"Ø rebar w/2"Ø aluminum cap PLS 15525



I hereby certify that this land surveying document was prepared and the related survey work was performed by me or under my direct personal supervision and that I am a duly licensed Land Surveyor under the laws of the State of Iowa.
Paul R. Herold 4-16-07
 Paul R. Herold Date:
 License number 15525
 My license renewal date is December 31, 2008.
 Sheets covered by this seal: Sheet P1

List Corners to be Indexed			
Corners	Section	Twp.	Range
NE	10	94	14
E 1/4	10	94	14

Project Number: 2007-035
 FB: Chickasaw County 1, Pgs. 9-10

File: S:_Projects\2007\2007-035\Drawg\2007-035.dwg, 4/16/2007 8:16:03 AM

Section 10-94-14
 As referred to in
 Engr. To Book

UNITED STATES PUBLIC LAND SURVEY CORNER CERTIFICATE

Land Survey Monuments situated in Section 11¹⁰, Township 94 North, Range 14 West, of the Fifth Principal Meridian, Chickasaw County, Iowa.

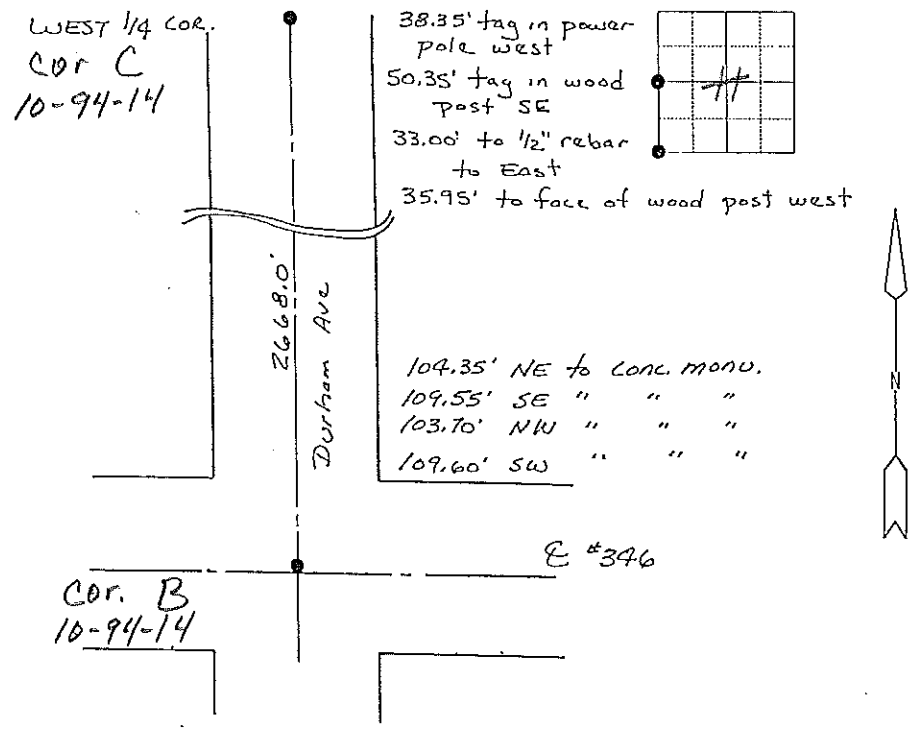
Previously recorded in N/A in County Recorder's Office.
(book, page, document number, etc.)

(Show reason for preparing this certificate, the evidence and detailed procedures used in establishing the corner positions and monumentation found or placed.)

Monument Description and Remarks: Found bridge spike with ribbon in center of road on fence line to east and to west re West 1/4 corner. Found nail in paving 3.3' north of centerline of Highway #346 at Southwest corner of section

PLAN - VIEW

(Show a minimum of three reference ties to durable physical objects, relevant monuments and physical conditions that will enable recovery of the corner)



I hereby certify that the survey work was completed and this land surveying document was prepared by me or under my direct personal supervision and that I am a duly licensed land surveyor under the laws of the state of Iowa

Signature: Steve Busse
 Name typed or printed: STEVE BUSSE

Date: 11/30/98 Reg. No. 9018

My license renewal date is December 31, 1998



Corners	List Corners to be Indexed		
	Section	Twp	Range
SW COR.	11	94	14
W 1/4 COR.	11	94	14