

Section 2-94-14
As referred to in
Eng. Tie Book

Chickasaw Co. Recorder
Cindy Messersmith
Fee Book 2009-0086
01/12/2009 80942AM
SEC COR CERT
Book: Page: # Pages: 1
Total Fees: \$7.00

UNITED STATES PUBLIC LAND SURVEY CORNER CERTIFICATE

OF 2

Land Survey Monuments situated in Section 12, Township 94 N, Range 14 W of the Fifth Principal Meridian, Chickasaw County, Iowa
Previously recorded in Book N/A, Page _____

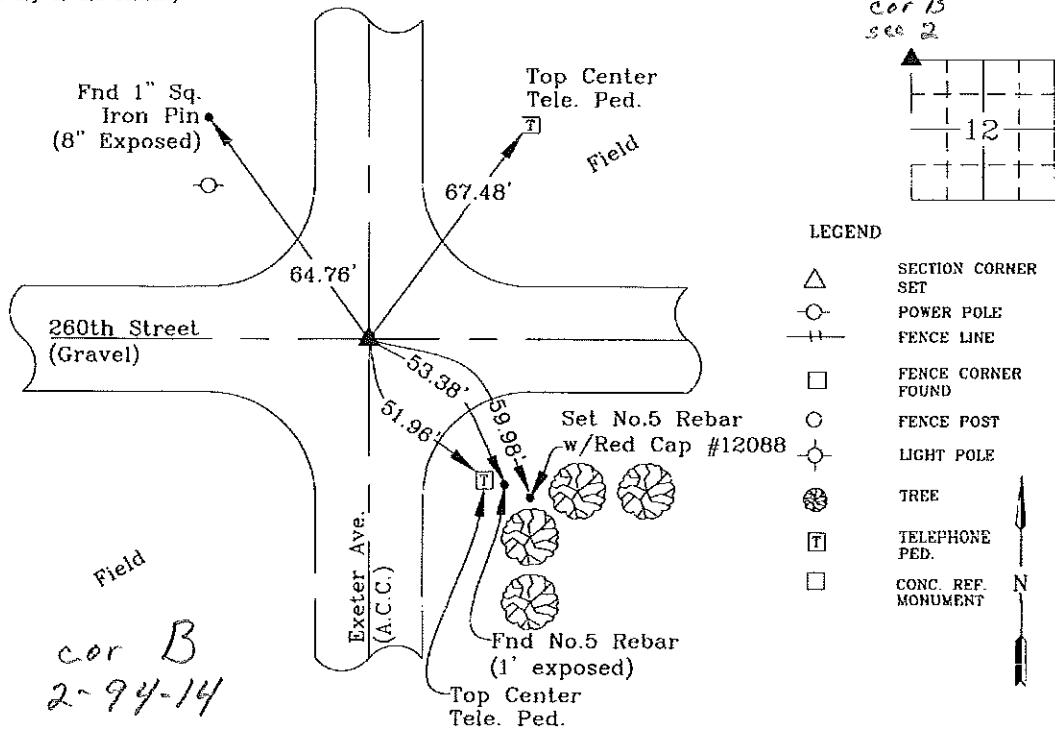
Show reason for preparing this certificate, the evidence and detailed procedures used in establishing the corner positions and monumentation found or placed.)

Monument Description and Remarks: Corner found for survey in the NW 1/4 of 12-94-14
Found PK Nail in A.C.C. paving per County Engineer Ties. Corner 1 foot West of road centerline

No Corner Certificate Previously Recorded

PLAN - VIEW

(Show a minimum of three reference ties to durable physical objects, relevant monuments and physical conditions recovery of the corner.)



cor B
2-94-14

I hereby certify that this land surveying document was prepared and the related survey work was performed by me or under my direct personal supervision and that I am a duly licensed Land Surveyor under the laws of the State of Iowa.



Wendell J. Lupkes 1-9-09
WENDELL J. LUPKES, L.S. DATE
License number 12088
My license renewal date is December 31, 2010
Pages or sheets covered by this seal: 1

List Corner to be Indexed

Corner	Section	Twp	Range
NW 1/4	12	94 N	14 W



VJ Engineering
1501 Technology Parkway
Cedar Falls, Iowa - 319-266-5829

SECTION CORNER
REFERENCE TIES

scale NONE
drawn by MAX
date 1/8/09