

Section 1-94-14
 As referred to in
 Eng. Rec Book

Chickasaw Co. Recorder
 Cindy Messersmith
Fee Book 2009-0087
 01/12/2009 09:51AM
 SCC SEC COR CERT
 Book: Page: # Pages: 1
 Total Fees: \$7.00

UNITED STATES PUBLIC LAND SURVEY CORNER CERTIFICATE

OF

Land Survey Monuments situated in Section 12, Township 94 N Range 14 W, of the Fifth Principal Meridian, Chickasaw County, Iowa
 Previously recorded in Book _____ Page _____

Show reason for preparing this certificate, the evidence and detailed procedures used in establishing the corner positions and monumentation found or placed.)

Monument Description and Remarks: Corner found for survey in the NW 1/4 of 12-94-14

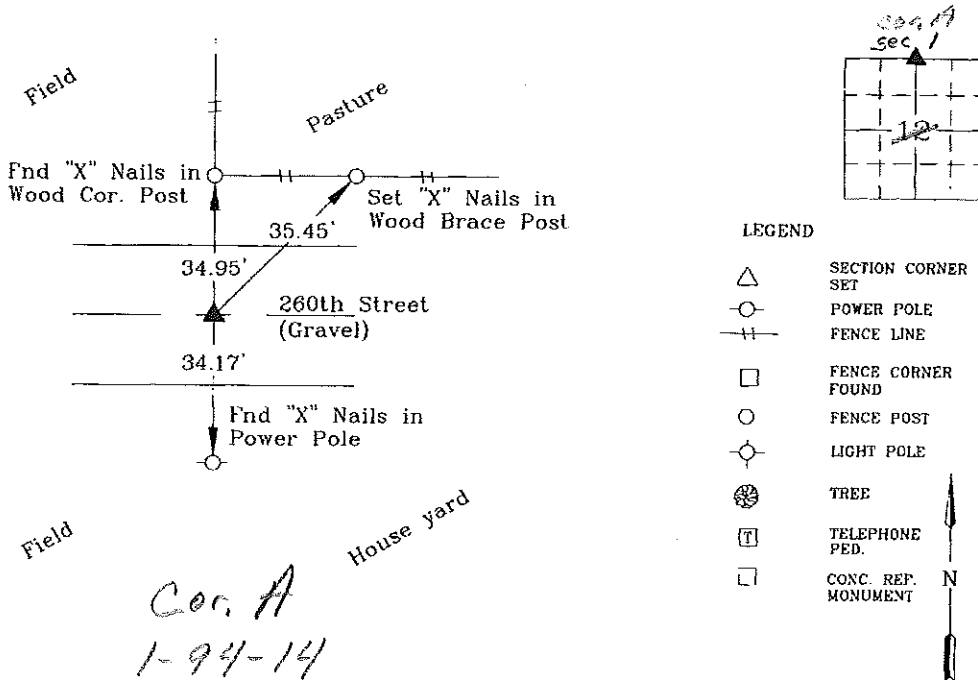
Searched area with metal detector and found 5/8"ø x 30" Rebar (bent), removed and found

5/8" Sq. Bar 20" Deep. Set 5/8"ø Rebar w/ Alum. Cap #12088 over 5/8" Sq. Bar

No Corner Certificate Previously Recorded

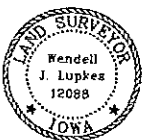
PLAN - VIEW

(Show a minimum of three reference ties to durable physical objects, relevant monuments and physical conditions recovery of the corner.)



Cor. A
 1-94-14

I hereby certify that this land surveying document was prepared and the related survey work was performed by me or under my direct personal supervision and that I am a duly licensed Land Surveyor under the laws of the State of Iowa.



Wendell J. Lupkes 1-9-09
 WENDELL J. LUPKES, L.S. DATE
 License number 12088
 My license renewal date is December 31, 2010
 Pages or sheets covered by this seal: 1

List Corner to be Indexed

Corner	Section	Twp	Range
North 1/4	12	94 N	14 W



VJ Engineering
 1501 Technology Parkway
 Cedar Falls, Iowa - 319-266-5829

SECTION CORNER
 REFERENCE TIES

scale
 none
 drawn by
 MLK
 date
 1/8/09