

2005-2161

Lee O. Gallentine LS, Ryken Engineering, 711 Park Ave, Ackley, IA 50601 - Ph 641-847-3273 Fax 641-847-2303

UNITED STATES PUBLIC LAND SURVEY CORNER CERTIFICATE

OF

Land Survey Monuments situated in Section 12, Township 94 North, Range 14 West, of the Fifth Principal Meridian, Chickasaw County, Iowa, Previously recorded in Not Applicable in County Recorder's Office

(Show reason for preparing this certificate, the evidence and detailed procedures used in establishing the corner positions and monumentation found or set.)

Monument Description and Remarks:

1/4 Cor-History of Corner

1982, 4/29-Found PK Nail per Co Rec's Bk 126 Pg 267

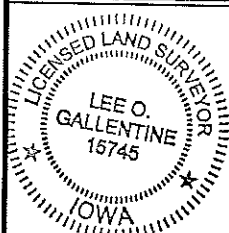
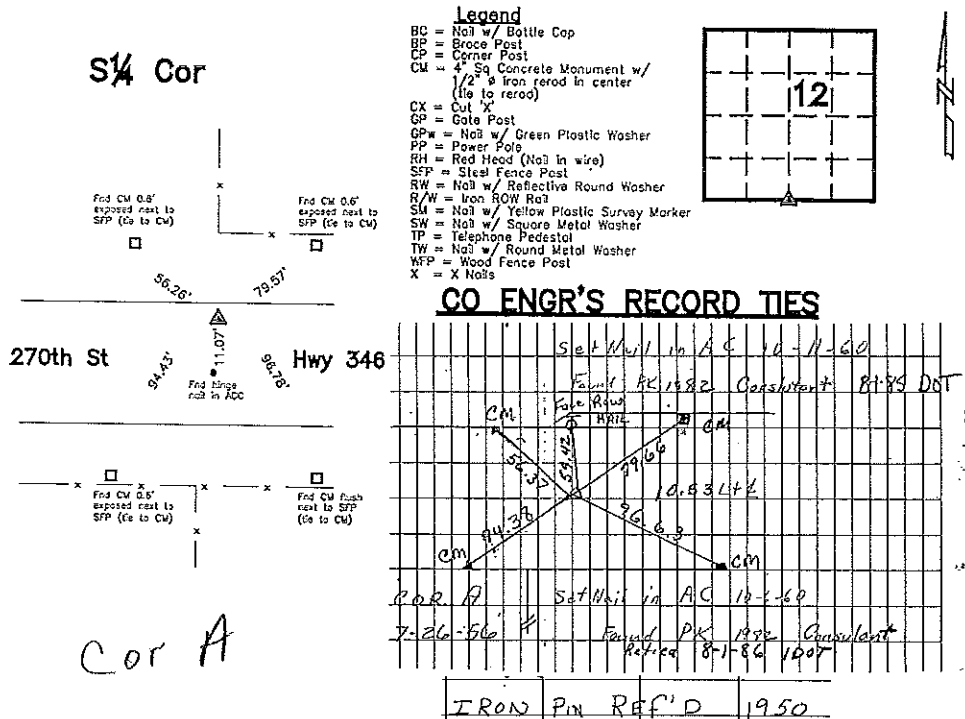
1982, 6-10-Found PK Nail at corner and Found PK Nail at centerline 10.5' South of corner per Co Rec's Bk 126 Pgs 441-446 Current Co Engr's records indicate that corner is monumented with 'Iron Pin' in '1950', 'Set nail in AC' on '10-6-60', 'Found PK' in '1982' and 'Retied' on '8-1-86' with ties as shown below.

Corner Recovery: Searched area with metal detector and found a 2 1/2"Ø aluminum IDOT monument (loose) 0.3' deep at 10.5'± N of the centerline of ACC road E-W, in-line with fenceline N, and 3.0'± E of fenceline S. Location of monument found matches that of record and record ties are within reason. Therefore, tied out center of monument, removed, and set 3/4"Ø x 1.0' aluminum capped iron rod (#15745) stamped '12', '13', and '1/4 COR' in place of IDOT monument to perpetuate monumentation and used it as the correct corner. All ties are plumb distance unless indicated otherwise.

This certificate is being prepared because there are no certificates on file for this corner and this corner was used for a survey in this section for Evelyn G. Thompson.

Plan View

(Show a minimum of three reference ties to durable physical objects, relevant monuments, and physical conditions that will enable recovery of the corner.)



I hereby certify that this land surveying document was prepared and the related survey work was performed by me or under my direct personal supervision and that I am a duly licensed Land Surveyor under the laws of the State of Iowa.

Lee O. Gallentine, PLS
 LEE O. GALLETINE, LS
 Date: Aug 5, 2005 License number: 15746
 My license renewal date is December 31, 2006

Pages or sheets covered by this seat 1

List Corners to be Indexed			
Corners	Section	Twp	Range
1/4 Cor	12	T94N	R14W